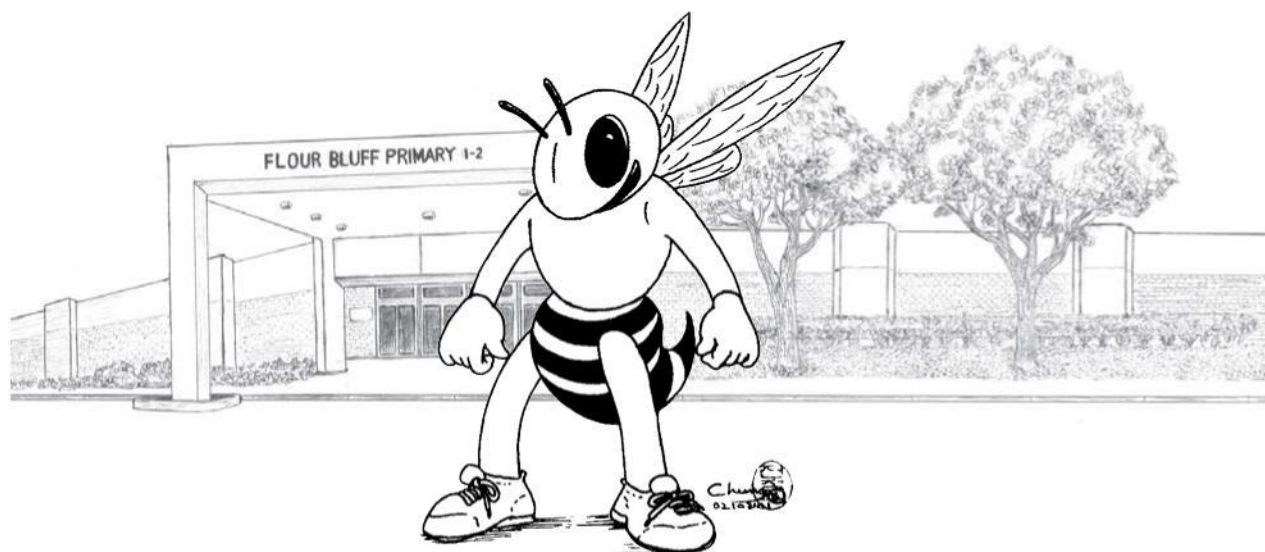


Flour Bluff Primary



Student/Parent Information Guide 2017-2018

2505 Waldron Road
Corpus Christi, Texas 78418
Phone: (361) 694-9600
Fax: (361) 694-9806

www.flourbluffschoools.net

FLOUR BLUFF PRIMARY SCHOOL

“Every Student Deserves My Best”

CAMPUS ADMINISTRATION

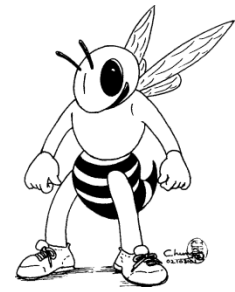
Shea Hernandez, Principal
Bill Robinson, Assistant Principal
Jeannette Elliott, Curriculum Supervisor
Cindy Blackstone, Counselor
Kim Knief, Librarian

SUPPORT STAFF

Marion Bramblett, Secretary
Krystal Jennings, Attendance Clerk
Kris Adams, Receptionist
Misty Mejorado, Nurse

STUDENT/PARENT INFORMATION GUIDE

Welcome to Flour Bluff Primary School. The goal of the Primary School is to provide an environment conducive to the absolute best academic, physical, and social growth of each student. In this environment, students will have the opportunity to develop academic and social skills that will enable them to function effectively in our ever-changing world. To attain our goal, there are certain academic and behavioral expectations that must be followed to ensure that each student has the best educational opportunity possible. This guide outlines those expectations and provides answers to questions regarding the school. For further clarification, or information, parents may contact the school via email, telephone, or personal visit.



Principal's Message

Welcome to an exciting new school year at Flour Bluff Primary!

Hello, I am Shea Hernandez, your Primary principal. I am excited to be your principal and be a part of a school district well rooted in tradition but also on the move with 21st century students.

I have 18 years' experience in education with kids from 3 years old to 8th grade. My passion for students lies in inspiring the love of reading and adventure. I hope to foster this in all our 1st and 2nd grade students here.

The staff and I are looking forward to an exciting and challenging year. This handbook has been prepared for the students, their parents, and others who may have questions concerning Flour Bluff Primary School. It is my hope that this resource will assist you in becoming a part of the tradition of excellence that characterizes our school and district.

The goal of this information guide is to provide you with the information necessary for the successful operation of the school as well as information about the typical school day, school organizations, activities, and student academic and behavior expectations. Both students and parents are encouraged to read and become familiar with the information provided. If you have any questions or concerns, please contact us at school.

I look forward to meeting and making friends with all my students, colleagues, and families. Please feel free to stop by, anytime, to say hello and get know the great things going on at the Primary campus!

Students first, success next!

Shea Hernandez
Principal

Table of Contents

| | |
|-------------------------------------------------------------------------------------------------------------------------------------------|-------|
| Assessments | 5 |
| Attendance | 5 |
| Awards | 6 |
| Bully Prevention and Intervention | 6 |
| Cafeteria | 6-7 |
| Confiscated Items..... | 8 |
| Counseling/Guidance | 8 |
| Dress Code | 9 |
| Early Checkout | 13 |
| Grading/Progress Reports | 12 |
| Health Room | 13-15 |
| Homework | 15 |
| Home/School Transition | 16 |
| Library | 16 |
| Lost and Found | 16 |
| Messages | 16 |
| Parent Involvement Plan | 17-18 |
| Parent-Teacher Conferences | 19 |
| Physical Education..... | 19 |
| Primary School Rules and Behavior Expectations | 19 |
| Recess | 19 |
| S.A.I.L. (Gifted and Talented) | 19-21 |
| School Hours | 21 |
| School-Parent Compact..... | 21 |
| School Sponsored Trips | 21 |
| School-Wide Program | 22 |
| Security and Safety | 22 |
| Special Education in Texas | 22 |
| Student Placement Procedures..... | 23 |
| Supplies | 23 |
| Tardies | 23 |
| Teacher Web Pages | 23 |
| Telephone | 23 |
| Video Recording | 24 |
| Appendix | |
| - Primary School Rules and Behavior Expectations | |
| - Primary School Positive Behavior Support Initiative | |
| - Official School Calendar | |
| - School Supply List - 1st Grade & 2 nd Grade | |
| - Title I School-Parent Compact | |
| - Options and Requirements for Providing Assistance to Students Who Have Learning Difficulties or Who May Need Special Education Services | |

This guide is revised annually. Any questions or suggestions on the material may be directed to the campus principal.

Assessments

Flour Bluff Primary School conducts regularly scheduled assessments embedded into the instructional timeline. Aligned with the curriculum, assessments have been designed to measure the student's academic progress and to give teachers the feedback they need to guide instruction and improve student achievement. The reading assessments determine a student's instructional reading level. We utilize the Texas Primary Reading Inventory (TPRI), Fountas & Pinnell assessments and teacher running records for reading progress. Students are required to read at an instructional level H in 1st grade and at an instructional level L in 2nd grade by the end of the school year. In math, we administer a TEKS based assessment each 9 week and a cumulative math assessment at the end of the year. Students are required to obtain 70% mastery on the end of year assessment.

Attendance

Regular school attendance is essential for a student to make the most of his or her education, to benefit from teacher-led activities, and to build each day's learning on that of the previous day. As your child progresses through school, the work will become harder, longer, and more difficult to make-up. It is the desire of the Flour Bluff Primary School to work with you and your child to avoid unnecessary absences.

Students must be in attendance at least 90% of the required number of days that school is in session. **Once a student is enrolled in school, the student MUST attend school and meet the 90% requirement to receive credit.** An attendance committee shall review all cases where a student falls below the required 90% attendance requirement. The school attendance committee will review your child's attendance record and reasons for absences and shall formulate a plan of action providing a reasonable opportunity for your student to regain compliance with this requirement. The committee may impose any of the following conditions to regain compliance with the 90% attendance requirement: completing additional assignments (possible pull-out from other activities to complete), maintaining attendance standards for the rest of the year, providing documentation when a student is absent, completion of all make-up work missed due to absences, mastery of the required Texas learning standards for that grade level, tutoring, and summer school. **In addition, please know attendance law requires the District Truant Officer to file, in a court of law, on parents and students for non-attendance.**

When a student is absent from school, a parent/guardian must contact the Flour Bluff Primary School office by phone (694-9687) and send a note within three days of the absence explaining the reason. If the child went to the doctor, please provide a doctor's note. If a student attends school any portion of the day and brings a doctor's note from

the appointment the same day, the student will not be counted absent for the day. If a student is absent for more than 3 consecutive days because of a personal illness, a statement from a doctor or health care clinic verifying the illness or condition that caused the student's extended absence from school must be provided and that they are cleared to return to school.

Awards

An awards assembly will be held in May to recognize those students who satisfy the following criteria.

- Achievement Awards - Certificate for areas of improvement or achievements.
- Participation Awards- Certificate for voluntary participation in school organizations and/or projects: Science Fair, Student Council, STARS Club, U.I.L. and Good Choice Club
- Reading Program Awards - Certificate for reading programs offered: Reading Zone and Waves of Pages (Schlitterbahn)
- Perfect Attendance Award - Students who were not absent during the school year will receive a Perfect Attendance Medal.
- Citizenship Award - Students who receive "3" and/or "4" in conduct throughout the school year will receive a certificate.
- Student of Character-Students are nominated by their teacher. One student per grade level is chosen from the campus to attend a spring banquet.

Bully Prevention and Intervention

Reports of bullying are dealt with seriously and immediately. Students are continuously reminded to follow campus expectations – Be Safe, Be Respectful, and Be Responsible. Students are given a warning the first time a bullying incident occurs and are counseled by the campus counselor. All parents are notified of the incident. If there are repeated bullying incidents then there are consequences including but not limited to: parent notification, loss of privileges, removal from Good Choice Club, in-school-suspension, and suspension. Counseling and support is offered to both the bully and the student who was bullied.

Cafeteria

Students are not allowed to leave campus for lunch during the instructional day. This is a safe schools practice which keeps the continuity of the school day and aids in socialization skills during non-instructional time. Students have a 30- minute lunch period. They may purchase a lunch for \$2.25 or bring their own lunch. Students who bring a lunch may purchase a milk or bottled water.

Breakfast is served in the cafeteria at no cost starting at 7:00 a.m. daily.

Lunch is served between 10:30 to 11:45 p.m.

Parents are welcome to eat lunch with their child. A meal can be purchased in the cafeteria at the adult meal rate or parents can bring their own meal. Additional information about the breakfast and lunch programs may be found in the District's Student/Parent Handbook.

Parents can purchase lunches in advance for any number of days, weeks, or months through the cafeteria or online at www.myschoolbucks.com. Myschoolbucks is a computerized software system that increases the efficiency of the food serving lines and the security of each student's account. Parents can view online their child's balance, review purchases, view menus, and deposit money into their child's food service account. Students who forget lunch money or exhaust their prepaid lunch balance can charge their lunch; however, parents need to promptly repay all charged meals. **Families are encouraged to apply for free or reduced-price meals if they meet eligibility guidelines. A free or reduced-price application must be submitted at the beginning of each school year.**

School Nutrition Department 2017-2018 Charge Policy



- Students in Grades Pre-K - K may charge a maximum of 7 days of Lunch meals
- Students in Grades 1-4 may charge a maximum of 7 days of Lunch meals
- Students in Grades 5-6 may charge a maximum of 7 days of Lunch meals
- Students in Grades 7-12 may charge a maximum of 5 days of Breakfast/Lunch meals

A "Courtesy" meal- consisting of a fruit choice, two vegetable choices, milk, and a toasted cheese sandwich- will be offered to students after the maximum number of charges have been accumulated.

Call out system is on Monday, Wednesday, & Thursdays for students who fall below a credit balance of \$2.00 and for students who have a negative balance. An orange slip for negative balances are sent home for students in Pre-K thru 6th grade. If Parents/guardians have a financial issue please call ext. 9022.

Applying for the Free and Reduced program is allowable at any time of the year should your financial situation change. You may apply online or call 694-9022 for an application to be mailed to you or any school should have an application available. The day application is received in the Central Kitchen we process them the same day, if all the information is correct.

Head Cashier in Central Kitchen notifies parents when a courtesy meal has been given to a student. It remains the responsibility of students and parents to send money to school for meals.

Prepayments can be made at www.myschoolbucks.com.

The U.S Department of Agriculture prohibits discrimination against its customers, employees, and applicants for employment on the bases of race, color, national origin, age, disability, sex, gender identity, religion, reprisal, and where applicable, political beliefs, marital status, familial or parental status, sexual orientation, or all or part of an individual's income is derived from any public assistance program, or protected genetic information in employment or in any program or activity conducted or funded by the Department. (Not all prohibited bases will apply to all programs and/or employment activities.)

If you wish to file a Civil Rights program complaint of discrimination, complete the [USDA Program Discrimination Complaint Form](http://www.ascr.usda.gov/complaint_filing_cust.html), found online at http://www.ascr.usda.gov/complaint_filing_cust.html, or at any USDA office, or call (866) 632-9992 to request the form. You may also write a letter containing all the information requested in the form. Send your completed complaint form or letter to us by mail at U.S. Department of Agriculture, Director, Office of Adjudication, 1400 Independence Avenue, S.W., Washington, D.C. 20250-9410, by fax (202) 690-7442 or email at program.intake@usda.gov. Individuals who are deaf, hard of hearing or have speech disabilities may contact USDA through the Federal Relay Service at (800) 877-8339; or (800) 845-6136 (Spanish). USDA is an equal opportunity provider and employer.

Confiscated Items

Confiscated items are turned into the office and parents can reclaim these items. If not reclaimed within two weeks after school ends, then items will be disposed of or given to charity.

Counseling/Guidance

Safety, character education, and positive behavior lessons are taught to all students throughout the year from the counselor and classroom teacher. Students participate in various lessons, activities, and assemblies designed to further each child's understanding of living and modeling good character. Topics covered in guidance lessons are based on district-wide character education traits. These traits include: Respect, Responsibility, Kindness, Initiative, Resourcefulness, and Communication.

Students have access to individual or small group counseling to reinforce character education through parent or teacher referral. Should you have any question or concerns, please do not hesitate to call the school counselor.

Dress Code 2017-2018

The District's dress code is established to teach grooming and hygiene, prevent disruption, and minimize safety hazards. Dressing and grooming standards are considered an essential part of the educational process. All students are expected to dress and groom themselves neatly in clothing suitable for school activities.

The school has the right to ask a student to change his/her dress or personal grooming habits if it is deemed inappropriate or disruptive to the educational environment. Repeat violations of the dress and grooming code shall be considered defiance of authority and may result in disciplinary action as described in the Student Code of Conduct. Administrators will make the final determination as to what constitutes appropriate attire. Parents who have difficulty providing clothing or shoes for their children should contact the campus counselor for assistance.

Standardized Dress Code Guidelines apply for Elementary, Intermediate and Junior High School students in addition to the FBISD Dress Code. SDGC has additional requirements to the FBISD Dress Code, which are communicated in the SDGC Student/Parent Handbook. Extracurricular activities may require special dress requirements. The sponsor or coach shall make these decisions.

Exceptions and additional requirements to the dress code may be made in supervised physical activities, some extracurricular activities, or school-sponsored events as determined by the principal. Medical exceptions shall be made upon certification from the family physician of the student.

The Student Code of Conduct contains the District Dress Code and each campus' dress code additions. The dress code is also found in each campus handbook and on the district website at www.flourbluffschoools.net.

The following expectations are required of all students in the district:

- All clothing must fit and be worn properly.
- All clothing must be appropriate for school.
- Revealing or tight-fitting materials/apparel are not appropriate.
- Garments may not have oversized pockets.
- Clothing are to be free of holes or frays.
- School-provided, athletics-issued garments are to be worn only during the designated athletic activities.
- All articles/layers of clothing together must meet the dress code requirements. No coats will be allowed to cover inappropriate dress.
- Hornet spirit apparel must be school or school organization related.
- Pajamas are not allowed.
- Beachwear is not allowed (casual playwear and sandals with backstraps are permissible for grades PK-2).
- Clothing must be in contrasting colors (Example: No black on black, red on red, blue on blue, camouflage on camouflage, etc.)
- The midriff may not be visible, even when hands are raised above the head.
- Undergarments must not be visible.

Pants/Shorts/Slacks/Skirts/Jeans/Denim/Dresses

- Jeans/denim, slacks, pants, shorts, and skirts/skirts/dresses must be appropriately sized for the individual and may not be oversized or undersized in whole or part.
- Items must be properly sized, fitted, and worn so as not to expose the midriff, other body parts or undergarments.
- Tights may be worn under another garment that meets the dress code.
- Must be standard jeans/denim/pants/slacks/shorts/skirts/dresses. Clothing must be no shorter than a dollar bill's width (2 ¾ inches) above the kneecap.
 - (Dollar bill's width does not apply at grades PK-3, Principal discretion).
- At grades PK-6, girls are strongly encouraged to wear shorts/tights/leggings under dresses, due to involvement in physical activities.

Shirts/Tops/Sweaters/Jackets/Coats

- No low-cut fronts, cutouts or cleavage showing.
- The following items of clothing are not appropriate for school wear, if worn alone:
 - Muscle shirts
 - Tank tops (may be worn with other layers, if the other layers meet dress code)
 - Backless, see-through, short, bare-midriff, cut-out tops and/or strapless attire
 - Tops with thin shoulder straps (may be worn with other layers, if the other layers meet dress code)
- Shoulder straps of shirts/tops/dresses must be at least the width of a dollar bill at grades 3-12.
- No trench coats/oversized jackets/coats are permitted.

Hair

- Male students will be clean-shaven.
- Hair must be clean, trimmed and kept out of the eyes.
- Sideburns may not be longer than the bottom of the ear.
- No arrangements that are distracting in the educational environment:
 - Designs (such as mohawks, rat tails, words, symbols, etc.)
 - Styles

Symbols

- Any article of clothing that displays illegal activities, alcohol, or drug slogans or other suggestive or inappropriate designs, including, but not limited to, those that promote (suggest) sex, violence, or anti-social behavior or do not promote positive behavioral expectations will not be allowed.

Accessories

- Beads, earrings, armbands, wristbands, or other items, which symbolize anti-social group membership will not be worn. This includes spiked rings, other spiked jewelry, wallet chains, or gang related jewelry.
- Head coverings - (for example, hats, caps, hoods, etc.) will not be worn or displayed at any time on campus during the school day unless the student is participating in a

school-sponsored outdoor activity. **When permitted, hats must be appropriately sized and will not be worn sideways or backwards.**

- Oversized necklaces will not be permitted (i.e., dog chains, large chains).
- Bandannas are not allowed.
- Jewelry on teeth or in the mouth are **not** permitted.

Shoes

- Shoes or sandals must be worn at all times.
- All shoes must fit appropriately (securely and appropriately fastened).
- Closed-toe and closed-heel shoes are strongly encouraged at grades PK-6, due to safety and outdoor activities.
- At grades PK-8, strapless, open-heeled sandals/shoes are **not** allowed.
- Platform, high heel or stacked sole shoes more than one inch high are not permitted at grades PK-4.
- It is beneficial for the students to wear tennis shoes or sports shoes to activities such as P.E./Athletics or recess.
- Steel toe shoes/boots are not allowed.
- Shoes with wheels connected are not permitted.
- Bedroom slippers are not allowed.

Body Markings/Tattoos/Earrings/Piercings/Make-Up

- Students will not be allowed to display tattoos while in school dress (must be covered at all times).
- Earrings are not allowed to be worn by boys in grades PK-6.
- Earrings and studs may be worn **only** in the ear.
- No other body piercing is permitted.
- Make-up must not be distracting in color, design, and style.
- Writing/marking on any visible part of the body is not acceptable.

Identification Badges

The student is to wear his/her school identification badge in front and above or at the waist (junior high and high school).

The campus principal has the final authority to determine whether a student's dress is within requirements of the District and campus dress codes. The principal's judgment will determine whether any items of dress, mentioned or not mentioned in the District or a campus dress code, will be considered inappropriate school attire.

In addition to the District Dress Code, the following campuses have requirements.

ALL STUDENTS MUST ABIDE BY THE CAMPUS AND DISTRICT DRESS CODE GUIDELINES.

Standardized Dress Requirements at Elementary, Intermediate and Junior High

In an effort to teach expectations for dress at ages where students generally begin selecting their own clothing and where students tend to mature physically, a standardized dress code has been implemented for grades 3-8.

All clothing must be in solid colors.

Pants/Shorts/Slacks/Jeans/Denim/Skirts/Dresses/Skorts

- Students can only wear plain, solid colored jeans/denim, slacks, pants, walking shorts, or skirts/skorts/dresses. Jeans/denim/pants/slacks/shorts/skirts/skorts/dresses must be standard-style.
- Shorts may have a solid color stripe on the side seam.
- Overalls are not permitted.
- Sweatpants are not permitted.
- No distracting embellishments or stitching.

Shirts

Shirts may be short or long-sleeved.

There are three (3) styles of acceptable shirts: All shirts must be appropriately buttoned/closed.

- Collared, buttoned **or snap-up** polo-style shirt
Polo shirts no longer than where the wrist of the student falls, when arms are hanging down at the side, will be permitted.
- Button-up **or snap-up**, oxford-style shirt
- Flour Bluff I.S.D. spirit t-shirt
- Zippers or sleeveless shirts are **NOT** permitted.
- Solid-colored shirts may be worn under the required shirts.
- May **NOT** have pictures, graphics, insignias, logos, stripes, or designer logos/emblems larger than one inch visible on shirt, collar, or sleeve.
- **Collarless sweatshirts are permitted**

Early Checkout

Occasionally, parents/guardians find it necessary to check students out early during the instructional day. The office staff is required to check the child's enrollment card to verify which adults have permission to pick up a student. **PARENTS MUST ALWAYS SHOW A CURRENT AND VALID PICTURE I.D. WHEN PICKING UP A CHILD DURING THE SCHOOL DAY.** If there is a court order denying visitation privileges, this documentation must be a part of the child's permanent record. A student will not be released to anyone that is not listed on his/her enrollment card. The designated attendance accounting time is 10:00 a.m. This is designated by the state of Texas. Parents are encouraged to arrange doctor, dentist, therapist, etc., appointments after this time.

Grading

Report cards are issued to students at the end of every nine weeks' period during the school year. For students in grade 1, promotion to grade 2 shall be based on grade level proficiency of 70% of the TEKS for mathematics, ability to read on Level H by the end of the school year and satisfactory completion of TEKS for language arts, social studies, and science. For students in grade 2, promotion to grade 3 shall be based on grade level proficiency of 70% of the TEKS for mathematics and an ability to read on Level L by the end of the school year and satisfactory completion of TEKS for language arts, social studies and science.

Report cards will be marked for all areas according to the following criteria:

1= Below Expectations

2= Experiencing Difficulty and Performing Below Grade Level

3= Meets Expectations

4 = Exceeds Expectations

N/A = Not Assessed

Parents are urged to carefully examine their child's report card and return the report card envelope promptly to school with their signature. Parents are invited to conference with their child's teacher regarding any question they might have about the report card and academic progress.

Progress Reports

On Wednesday of the fifth week of each nine weeks grading period, a progress report is sent home indicating any areas where the student needs improvement. Parents are urged to discuss these reports with their children. Please contact the teacher when you need an explanation. The progress reports must be returned to the teacher with a parent's signature.

Health Room

Medicine at School

All medication must be immediately delivered to the school nurse upon arrival to school. (Please see the **Student Code of Conduct**.) At no time, shall a student have in his/her possession any form of medication (non-prescription, prescription, herbal substances, or dietary supplements). All medication should be brought to school by a parent/guardian and is kept in the nurse's office. A medical release form/letter from the parent/guardian giving a written request to administer the proper medication must be signed by the parent/guardian giving authorized school personnel directions for its administration. The request must include the student's name, date, name of drug, time and dosage required, and must be signed by the parent/guardian.

District employees will not give a student prescription medication, nonprescription medication, herbal substances, anabolic steroids, or dietary supplements, with the following exceptions:

- Only authorized employees, in accordance with policies at FFAC, may administer medication.
- Prescription medication, in the original, properly labeled container, provided by the parent, along with a written request. The prescription must be current and not expired.
- Prescription medication from a properly labeled unit dosage container filled by a registered nurse or another qualified District employee from the original, properly labeled container. The prescription must be current and not expired.
- Nonprescription medication, in the original, properly labeled container, provided by the parent along with a written request. The medication must be current and not expired.
- Herbal or dietary supplements provided by the parent, only if required by the student's individualized education program (IEP) or Section 504 plan for a student with disabilities. The supplement must be current and not expired.
- The district will maintain and administer to a student nonprescription medication for emergency situations, but only in accordance with the guidelines developed with an approved, licensed medical advisor, and when the parent has previously provided written consent to emergency treatment on the district's form.

The district and campuses do not maintain a regular supply of non-prescription medication. Parents are expected to supply the appropriate medication for their child.

If a student has been prescribed asthma or anaphylaxis medication for use during the school day, the student and parents should discuss this with the school nurse and principal. A student with asthma or severe allergic reaction (anaphylaxis) may be permitted to possess and use prescribed asthma or anaphylaxis medication at school or school-related events **only if he or she has written authorization from his or her parent and a physician or other licensed health-care provider.** The authorization must be on file with the school nurse. The student must also demonstrate to his or her physician or health-care provider and to the school nurse the ability to use the prescribed medication, including any device required to administer the medication.

In accordance with a student's individual health plan for management of diabetes, a student with diabetes will be permitted to possess and use monitoring and treatment supplies and equipment while at school or at a school-related activity. A student with diabetes who needs treatment or care at school must have a Diabetes Management and Treatment Plan (DMTP) developed by the physician and parent. A copy is to be provided to the school; from this, the principal, nurse, parent or guardian, physician, and teachers are to develop an individualized health plan for the student. The parent or guardian must sign an authorization for care to be given. See the school nurse or principal for more information and see policy **FFAF (LEGAL)**.

The administration of any medication containing a narcotic is discouraged during school hours. If a student requires medication of this type for pain, it is recommended that he/she remain at home until a milder form of medication is indicated. It is highly recommended that parents do not administer narcotics before school due to safety issues at school.

It is very important that each student has on file in the Health Room emergency physician and hospitalization information with current working phone numbers. The emergency information must be signed. Having the correct information on file will greatly assist personnel in contacting a parent or physician if your child has an accident or becomes ill. **If a parent's phone number changes during the school year, please immediately give the new number to the nurse and the office.**

Homework

Homework provides an opportunity for children to extend their learning. It reinforces skills taught in the classroom, provides time to makeup work due to absences, improves a child's performance during class, develops effective study habits, and provides an important link between home and school.

1. Homework and/or books to read (by child and parent) will go home at the discretion of the teacher. The length of assignments is determined by the individual student's needs and ability. A practical timeframe for children to complete homework should not exceed thirty minutes per night.
2. Parent-teacher contact is essential to the learning process and should be utilized when questions arise concerning homework. Children are expected to complete and return homework on time. Homework will be corrected and students will receive credit. Late homework may result in the denial of privileges or extension activity while the assignment is being completed.
3. Make-up Work: When students return to school after an absence, they will have the same number of school days to turn in work as they were absent. For example: 3 days absent= 3 days to make up missed work after returning to school.

Home/School Transition

During the first two weeks of the school year, parents may accompany their child/children into the Primary School building and to the classroom to leave their backpacks. After this time period, please leave your child at the front entrance. Staff on duty will assist the children to arrive safely at their designated location.

Library

The library supports and enhances the curriculum at the primary school. Primary students come to the library with their class on a weekly schedule. First grade students may check out one book. Second grade students may check out two books. Students may also check out during open check out times. Check out privileges will be suspended for late or lost books. All books must be returned or paid for before student check out privileges are reinstated. The library offers reading incentives, including, but not limited to, a pumpkin literacy contest, reading fair, and reading programs. Prizes are awarded for outstanding participation. The library also hosts two book fairs and an author visit. Library hours are 7:30 a.m.-3:15 p.m.

Lost and Found

Lost clothing items, lunch boxes, book bags, and backpacks are placed in the back hall near the exterior doors to be reclaimed. Smaller personal items are turned into the reception desk. Students and parents are free to look through the lost and found. If items are not reclaimed within two weeks after school ends, the items are donated to a charity or thrown away.

Messages

Parents who need to leave a message for their child during the school day must write a note with the parent's name, child's name, and the date. Transportation changes must be written and signed by the parent/guardian. Verbal changes over the phone require a student ID number before delivery to the student. Parents will be issued one Student ID number card at the beginning of the school year. Please refer to this ID Number when leaving a message or asking making a change to your child's after-school routine. Only share the student ID number with individuals who will be picking up your child. If you lose or misplace your child's card, please come by the school office with a valid picture ID to have the card replaced. After-school change forms are delivered to teachers at 1:30 p.m. **Please call prior to 1:30 p.m. to be sure your child receives the message before dismissal.** School staff will deliver messages only at the end of the day. **Do not rely on voice mail or email for changes in dismissal.** Voice mail is available for leaving non-emergency messages.

Parent Involvement Plan 2017-2018

In collaboration with parents and the campus SBDM committee, Flour Bluff Primary has created a Parent Involvement Plan. The purpose of the plan is to provide activities and services which support students in meeting the state's academic standards. In order to build a dynamic, home-school partnership. Flour bluff Primary, will implement the following parental involvement activities:

| Purpose | Activities/Strategies |
|-----------------------------------------------------------------------------------------------------------------------------------------------------------------------------------------------------------------------------------------------------------------|------------------------------------------------------------------------------------------------------------------------------------------------------------------------------------------------------------------------------------------------------------------------------------------------------------------------------------------------------------------------------|
| Parental Involvement Plan Requirements | |
| The school will involve parents in the joint development and joint agreement of its School Parental Involvement Plan, in an organized, ongoing, and timely manner under section 118(b) of the ESEA. | Meet the Teacher Open House (2) Parental Involvement Activities PTO Meetings |
| The school will distribute to parents of participating children and the local community, the School Parental Involvement Plan. | Meet the Teacher Open House (2) Parent Conferences School Website Note Home School Messenger |
| The school will provide to parents of participating children a description and explanation of the curriculum in use at the school, the forms of academic assessment used to measure student progress, and the proficiency levels students are expected to meet. | Faculty and Staff calling parents Faculty and staff electronic notification Newsletters Parent conferences Title 1 Parent meeting Website information 1 st Week Information Packet Sneak Peek RTI meetings GT parent night |
| Shared Responsibilities for High Student Academic Achievement | |
| The school will build the schools' and parents' capacity for strong parental involvement of parents and support a partnership among the school involved, parents, and the community, to improve student academic achievement. | PTO meetings and events McTeacher & Chuck E. Cheese Night DOC-Dads on Campus Grandparents Breakfast Muffins with Mom & Donuts with Dad Book Fairs (2) Student Health Advisory Meetings SBDM Meetings (campus) DLPDM Meetings (district) Red Ribbon Week Veteran's Program Project Turn Around School Volunteer Luncheon GT-Wax Museum |

| | |
|-----------------------------------------------------------------------------------------------------------------------------------------------------------------------------------------------------------------------------------------------------------------------------------------------------------------------------------------------------------------------------------------------------------------|-------------------------------------------------------------------------------------------------------------------------------------------------------------------------------------------------------------------------------------------------------------------------------------------------------------------------------------------------------------------|
| | <p>Science Fair Hispanic Heritage Readers Author Visit</p> |
| <p>The school will, with the assistance of the district, provide materials and training to help parents work with their children to improve their child's academic achievement, such as literacy training, using technology, and behavior strategies to foster parental involvement.</p> | <p>Regional Parent Conference Power Up with Reading parent night Parent conferences and trainings Reading Restaurant Academic Nights: Math, Science, Fine Arts, Technology</p> |
| <p>The school will, with the assistance of the district and parents, educate its teachers, pupil services personnel, principals, and other staff, in how to reach out to, communicate with, and work with parents as equal partners, on how to implement and coordinate a parent program and build ties between parents and school.</p> | <p>RTI meetings Teacher support of PTA meetings and events Home visits Attendance meetings Professional development/trainings</p> |
| <p>The school will, to the extent feasible and appropriate, take the following actions to ensure that information related to the school and parent-programs, meetings, and other activities, is sent to the parents of participating children in an understandable and uniform format, including alternative formats upon request, and to the extent practicable, in a language the parents can understand.</p> | <p>Newsletters School website School messenger system Daily behavior folders Marquee</p> |
| <p>Building Capacity for Involvement</p> | |
| <p>The School Parental Involvement Plan may include additional discretionary activities that the school, in consultation with its parents, chooses to undertake to build parents' capacity for involvement in the school to support their children's academic achievement.</p> | <p>Drive in Movie Night Field Day Holiday Programs Thanksgiving luncheon Literacy Pumpkin & Best Vest Contest Storybook Character Parade Storybook Forest Homecoming Parade Trunk or Treat Fieldtrips Awards ceremonies</p> |

Parent-Teacher Conferences

With parent help, teachers do the best job of educating each child. Parents have valuable information about their child that can be very useful to the teacher. The teacher can offer suggestions to parents on how they can help with the education process at home. For these reasons, parent-teacher conferences are encouraged. These conferences are scheduled during the teachers' conference periods or at other times convenient for the parent and teachers' instructional time. Please call ahead of time to make an appointment.

Physical Education

Students will have PE for a 45-minute period four days a week. Students' physical fitness ability is tested twice during the year. Students are encouraged to wear tennis shoes each day. **Grading:** Student progress is measured each nine weeks in PE. **Excuses:** A student is not excused from PE for the day unless a note from the parent explains why they cannot participate or a teacher recommendation. A doctor's note will be required for those students in attendance at school who must miss more than (3) consecutive days.

Primary School Rules and Behavior Expectations

Students will be expected to be well-mannered and abide by the expectations established by the school district and school staff. (See the Appendix for Primary School Rules and Behavior Expectations).

Recess

Students have a 20-minute recess break daily. Failure to follow the playground/recess expectations will result in removal from the playground area.

S.A.I.L. (Gifted & Talented Program)

The Flour Bluff Independent School District's gifted and talented program, Students Accelerating in Innovative Learning (S.A.I.L.), is designed to serve identified students who need challenges in their educational instruction beyond the regular classroom objectives. The S.A.I.L. instructional program is differentiated to promote extension and enrichment for identified students.

Screening Procedures

1. Referrals are accepted at all times for the S.A.I.L. (Gifted and Talented) Program. Students are referred by anyone, including parents, staff, community members, or through self-nomination.

2. Students are assessed per the district timelines and procedures posted on each campus.
3. Each campus S.A.I.L. (gifted and talented) Committee meets to review assessment data, screen applicants, and to recommend placement of students for whom the S.A.I.L. program is an appropriate placement. Qualification is based on general intellectual ability, specific subject matter aptitude, and creative/productive thinking skills.

Parents receive notification regarding qualification. Students who qualify must submit a parent permission form in order to be placed and served.

Furloughs

A student or parent may request a temporary leave from the program of not less than one semester or more than one year, for extenuating circumstances. The student's eligibility to re-enter the S.A.I.L. Program shall be reviewed by the Primary campus committee at the end of the furlough period.

Exit Policy

The Primary campus committee may exit a student from the S.A.I.L. Program upon the recommendation of the teacher and/or parent when the program fails to meet the student's educational needs. Reasons for consideration of exit will include:

- Evidence of working at a level of frustration, observable through performance and/or behavior.
- Demonstration of clear inability or unwillingness to maintain the standards of program performance by maintaining a below satisfactory grade average for two nine weeks or more.
- Failure to participate in the program in the appropriate grade level and course offerings for the areas in which the student is qualified.
- Parent request for removal is automatic. An exit form requesting removal is signed and dated by the parent.

Procedures for exit will include a parent conference, a counselor/student conference, and a dismissal review by the S.A.I.L. committee, to include input from the parent, teacher, and Primary campus administrator.

Appeals

Parents or students may appeal any final decision of the campus committee regarding selection for or removal from the S.A.I.L. Program. Written notice of desire to appeal should be given to the campus administrator. An appeal shall be made first to the campus committee within 10 days of notification. The campus committee then meets and reviews the appeal and makes a decision. Any subsequent appeals shall be made in accordance with FNG (LOCAL) in Board Policy.

Timeline and Procedures

Referrals for testing are accepted any time. Current students who are referred will be assessed in April/May for the following school year. Applications must be submitted by the specific deadlines communicated each year for testing. Assessment will occur for new August entry students within the first ten days of the semester. Students who qualify will be placed within the first three weeks of the fall semester. Students who have been enrolled in a gifted and talented program in another district immediately prior to enrollment at F.B.I.S.D. will be assessed for entry into the program upon enrollment. Kindergarten students will be assessed for eligibility by March 1st of each year.

School Hours

The instructional school day is from 7:40 a.m. – 3:03 p.m. Students are expected to arrive on time and to be picked up on time from school.

Notice: Students should not arrive on the school grounds before 7:00 a.m.

Primary students are not allowed to ride bikes to and from school.

| | |
|-----------------------|----------------------------------------------------------------------------------------------------------------------------------------------------------------------------|
| 7:00 a.m. – 7:35 a.m. | Breakfast is served in the cafeteria. |
| 7:00 a.m.–7:30 a.m. | Students sit by their classroom (whisper/quiet time) in halls or have breakfast in the cafeteria. |
| 7:30 a.m.–7:40 a.m. | DEAR Time (Drop Everything and Read)- Students need to have a book from home, a library book, or school book to read during this time. Books are provided in each hallway. |
| 7:40 a.m. | Instructional day begins. Tardy bell rings. |
| 3:03 p.m. | Dismissal |

School-Parent Compact

The School-Parent Compact outlines how parents, the school, and the students will share responsibility for improved student achievement, and the school and parents will build and develop a partnership to help children achieve Texas Academic Standards. (See Appendix)

School Sponsored Trips

Off-campus field trips may be scheduled during the school year. Permission slips will be filled out at registration. Parents will be notified of field trips at least one week prior to the trip. A student will not be allowed to attend a field trip without a permission slip being on file.

School-wide Program

Flour Bluff Primary is a Title I school-wide school. Teachers utilize team planning and collaboration as a vital component in planning for instruction. Interventions and enrichment are provided to meet the academic needs of all students. Students also receive Music, Physical Education, and Science Lab instruction from additional staff members. In all areas, high expectations are maintained for all students in academic and behavior standards.

Security and Safety

Security is an important subject with a student population of 800 plus students. Our first concern is always the health, safety, and emotional well-being of our students. Access to the Primary School will be through the FRONT ENTRANCE ONLY. Side doors will be locked during the instructional school day. To ensure student security at all times, there is a designated area for parents who pick up their children to wait at dismissal time. This area is either outside the front entrance or inside by the reception area. Parents and visitors are not allowed in the student hallways without a visitor pass and prior permission.

All visitors must electronically register at the campus/reception desk. Visitors must wear a badge while on campus and return the badge upon checkout. All parents/guardians must stop by the campus/reception desk if they plan to pick up a child early. Parents/guardians/others who pick up children need to provide proper identification before being allowed to remove a child from campus. The child's classroom will be called and the teacher will be asked to send that child to the office. Parents/guardians may visit in their child's classroom for a period of up to 45 minutes by a scheduled appointment through the principal's office. Additional visits will be discussed and approved by the principal. Visitors of school age will not be allowed in the classroom. No pets or animals will be allowed without written permission from the teacher and principal, unless a certified service animal.

The Primary School will conduct periodic drills for different types of emergencies. Teachers will take class rosters for roll call and an emergency equipped backpack to their assigned area. All students are expected to listen and follow directions.

Special Education in Texas

A written explanation of the options and requirements for providing assistance to students who demonstrate learning difficulties or who need, or may need, special education may be found in the Appendix section.

Student Placement Procedures

Teacher requests are accepted and reviewed at Flour Bluff Primary during the first week of May. Every consideration is given to try and accommodate these requests within the confines of maintaining an ethnically balanced, boy/girl ratio needed in each class. Teacher request forms will be available in the Primary School office at the beginning of May. Requests will be accepted during scheduled dates communicated. No more than ten requests per teacher will be allowed.

Supplies

Supply lists for first and second grade may be found in the Appendix. Some items may be collected by teachers to hold as a class set. Please check with your child's teacher to keep supplies replenished.

Tardies

Punctuality is very important at Flour Bluff Primary School. Students who consistently arrive tardy are unable to receive the maximum educational benefits available to them. **Students are tardy after 7:40 a.m. Students arriving after 8:00 a.m. must be signed in at the reception desk by the parent.** A tardy slip will be given to the student to be admitted to class. The teacher is responsible for keeping track of the student's tardies. **Students arriving after or leaving before 10:00 a.m. will be counted as absent.** Students arriving late or having to leave early due to a doctor's appointment need to provide a doctor's note documenting the appointment.

Teacher Web Pages

Teacher web pages are available on the district website at www.flourbluffschoools.net.

- Under campuses tab, click Primary School.
- Under campus links, click Teacher Web Pages.
- Under directory, click Faculty and Staff, then click Teachers, then choose your child's teacher's name.

Telephone

Office telephones are available to students for emergency purposes only (sick, injuries, etc.). Students will not be called from class for phone calls. Teachers cannot receive phone calls during instructional time. Please contact teachers before school, after school or during their assigned conference period. For safety and consistency, teachers cannot accept transportation changes. All transportation changes must be made through the reception desk, 694-9694.

Video recording

Students are occasionally video-taped/photographed by local news, print media, and school personnel for performances, showcasing work, or honorable mentions. If this exposure is deemed inappropriate by parents/guardians, please notify the office in writing.



Primary School Rules and Behavior Expectations

Be Safe

Be Respectful

Be Responsible

| | | | |
|-------------------------------------------|---------------------------------------------------------------------------------------------------------------------------------------------------------------------------|---------------------------------------------------------------------------------------------------------------------------------------------------------------------------------------------------------|----------------------------------------------------------------------------------------------------------------------------------------------------------------------|
| Classroom & Everywhere on School Property | <ol style="list-style-type: none">1. Keep hands, feet and objects to yourself.2. Always walk.3. Use all equipment and materials properly. | <ol style="list-style-type: none">1. Use kind words and actions.2. Wait patiently for your turn.3. Raise your hand for permission, to speak or to get out of your seat. | <ol style="list-style-type: none">1. Set a good example.2. Listen attentively and follow adult direction.3. Clean up after yourself. |
| Cafeteria | <ol style="list-style-type: none">1, 2, 3,4. Sit with your feet on the floor, bottom on the bench, and facing in the proper direction. | <ol style="list-style-type: none">1, 2, 3,4. Keep all food to yourself.5. Use Level 1 voice. | <ol style="list-style-type: none">1, 2, 3,4. Report spills and emergencies.5. Use the classroom restroom before going to lunch. |
| Playground/Recess | <ol style="list-style-type: none">1, 2, 3,4. Stay in sight of your teacher and within playground boundaries. | <ol style="list-style-type: none">1, 2, 3,4. Include everyone and treat others as you would want to be treated. | <ol style="list-style-type: none">1, 2, 3 |
| Halls | <ol style="list-style-type: none">1, 2, 3,4. Keep your hands behind your back.5. Stay to the right. | <ol style="list-style-type: none">1, 2, 3,4. Hold the door for others.5. Walk silently (zero voice). | <ol style="list-style-type: none">1, 2, 3 |
| Restrooms | <ol style="list-style-type: none">1, 2, 3,4. Wash hands after use. | <ol style="list-style-type: none">1, 2, 3,4. Knock on stall door. | <ol style="list-style-type: none">1, 2, 3,4. Flush toilet after use.5. Put towels in trash can.6. Return promptly. |
| Arrival and Dismissal Times | <ol style="list-style-type: none">1, 2, 3,4. Walk only on sidewalks and in crosswalks. | <ol style="list-style-type: none">1, 2, 3,4. When someone greets you, smile, shake hands, or say something positive. | <ol style="list-style-type: none">1, 2, 3,4. Go directly to class.5. Keep items in your backpack. |
| PE/Music | <ol style="list-style-type: none">1, 2, 3 | <ol style="list-style-type: none">1, 2, 3 | <ol style="list-style-type: none">1, 2, 3,4. Participate in activities.5. Return equipment where instructed. |
| Bus | <ol style="list-style-type: none">1, 2, 3,4. Remain seated.5. Face the front. | <ol style="list-style-type: none">1, 2, 3,4. Use level 1 voice. | <ol style="list-style-type: none">1, 2, 3,4. Keep items in your backpack. |

Primary School Positive Behavior Initiative Support Guidelines

The Primary School participates in the district's Positive Behavior Initiative Support (PBIS) initiative for the 2017-2018 school year. The following information is an overview of the discipline management program we have in place for the welfare and safety of each student on our campus.

There are three Expectations that are taught school and classroom wide:

Be Safe

Be Respectful

Be Responsible

Each of these expectations have specific behaviors under their categories that are directly taught by the teachers and other Primary School staff members throughout the year. The expectations are taught in a positive manner at the beginning of the school year and reinforced throughout the year by all staff. Lesson plans developed by the PBIS Team of teachers and administrators are utilized in the classrooms by teachers.

It is our goal to teach all children to be responsible for their actions, to focus on behaviors that are positive, and to help children change behaviors that are not appropriate. It is our intention to help our students realize that the choice to follow the expectations and enjoy the rewards of their efforts is theirs, just as it is their choice to disregard them and accept consequences. We hope that positive responses are a natural, consistent part of our approach that will inspire our students to demonstrate respect, responsibility, and safety.

Students can earn "Golden Buzzy slips" at school every day for demonstrating those expectations in all settings of the school. Golden Buzzy winners are drawn and announced weekly. Teachers also give buzzy slips within the classroom to earn privileges decided by the teacher. In addition, students celebrate the end of each 9-week grading period as participants of Good Choice Club, when they have not had any office discipline referrals or more than 5 marks in the PBIS student folder during that 9-week period. Celebrations may be in the form of a game day, a movie in the auditorium, a movie in the classroom, inflatable activities, fieldtrip etc.

It is our sincere hope that each student's experience at the Primary School is a positive one, inclusive of academics and discipline. In order to accomplish that, parent support is vital. We are excited about the opportunity to share your child's learning experiences with you and we encourage you to discuss the school expectations on a regular basis. There are posters displayed throughout the campus detailing the specific behaviors we are looking for. Come by to visit us and see how the students and staff are demonstrating the power of the positive!

All consequences are intended to provide all students with a safe and respectful learning environment as well as help develop responsibility and positive self-esteem. Serious code of conduct violations will result in an automatic office referral.

Flour Bluff ISD Primary School Supply List 2017-2018



First Grade Supply List

- | | |
|--------------------------------------------------------------------------|----------------------------------------|
| (2) Boxes of crayons (24 count) | (2) Primary composition books |
| (2) Bottles of white glue (8 oz.) | (1) Bottle of hand sanitizer (12 oz.) |
| (4) Large glue sticks or (6) small | (2) Large boxes of facial tissue |
| (2) Large pink erasers | (1) Container of disinfecting wipes |
| (36) #2 sharpened pencils | (1) Box of gallon freezer bags (girls) |
| (1) Pkg. washable markers | (1) Box of quart freezer bags (boys) |
| (1) Pointed tip student scissors | (1) Ear buds for technology use |
| (1) Regular size plastic school box | |
| (2) Spiral notebooks- wide rule (red, blue, yellow, green, 70 count) | Optional: |
| (4) Dry erase markers (black, low odor) | (1) Paper towels (girls) |
| (1) 1in. 3 ring binder w/ clear outside cover | (1) Paper plates (boys) |
| (5) Sturdy plastic folders with brads & pockets (solid colors) | (1) pkg. water colors |
| | (1) Pkg. of colored pencils |

PLEASE NOTE:

ROLLING BACKPACKS ARE NOT ALLOWED FOR SAFETY REASONS.
NAME IS NOT NEEDED ON SUPPLIES. ITEMS FOR WHOLE CLASS USE.

Second Grade Supply List

- | | |
|--------------------------------------------------------------------------|--------------------------------------|
| (1) Bottle of white glue (8 oz.) | (1) Pointed tip student scissors |
| (4) Large glue sticks | (1) Primary composition books |
| (4) Spiral notebooks (70 count-solid colors) | (1) Ear buds for technology use |
| (1) Pkg. of wide rule notebook paper | Optional: |
| (2) Boxes of crayon (24 count) | (1) Construction paper package |
| (2) Large pink erasers | (1) Pkg. 3x5 index cards |
| (36) #2 sharpened pencils | (1) Pkg. of colored pencils |
| (4) Sturdy plastic folders with brads & pockets (solid colors) | |
| (1) Plastic regular size school box | |
| (1) Pkg. of washable markers | |
| (1) Box of gallon freezer bags (girls) | |
| (1) Box of quart freezer bags (boys) | |
| (1) Bottle of hand sanitizer (12oz.) | |
| (1) Container of disinfecting wipe | |
| (4) Dry erase markers (black, low odor) | |
| (2) Large boxes of facial tissue | |

Flour Bluff Primary Student/Parent/School Compact 2017-2018

In accordance with the Every Student Succeeds Act, each school must develop a school-parent compact. The compact outlines how the school staff, parents and students will share responsibility for improved student achievement and the means by which the school and parents will build and develop a partnership to help children achieve to their highest potential.

Student Pledge

- ✓ I pledge to come to school on time each day unless I am sick.
- ✓ I pledge to show respect for myself, fellow students, the school and other adults.
- ✓ I pledge to do my best in behavior and school tasks and work cooperatively with other students and adults.
- ✓ I pledge to give my parents all notices and school information received from the school.
- ✓ I pledge to know and follow school rules and dress code.
- ✓ I pledge to do my homework daily, ask for help when needed and return it the next day.
- ✓ I pledge to read every day outside of school time.

Parent Pledge

- ✓ I pledge to make sure my child attends school on time each day unless sick.
- ✓ I pledge to know and reinforce school rules with my child and support my child's teacher and school with discipline expectations.
- ✓ I pledge to ensure my child follows the dress code.
- ✓ I pledge to communicate regularly with my child and my child's teacher regarding his/her progress.
- ✓ I pledge to establish a time and place for homework every day and make sure it is returned to school.
- ✓ I pledge to assist my child in reading outside school time each day and monitor TV and computer usage.
- ✓ I pledge to participate in school activities such as decision making, volunteering and parent conferences.

School Pledge

- ✓ We pledge to make the school a safe and positive learning experience each day.
- ✓ We pledge to treat children and families with dignity and respect at all times.
- ✓ We pledge to provide high quality curriculum and instruction aligned with the state standards.
- ✓ We pledge to participate in professional development opportunities to improve teaching and learning and support family & community partnerships.
- ✓ We pledge to provide a variety of teaching strategies, interventions, meaningful material and emerging technology to maximize student potential and individual learning styles.
- ✓ We pledge to be available for parent conferences upon request and return phone calls in a timely manner.
- ✓ We pledge to communicate regularly with parents and students about student progress, behavior and school/district/community activities.
- ✓ We pledge to provide opportunities for parents to volunteer and participate in school activities.

Student Signature: _____

Date: _____

Teacher Signature: _____

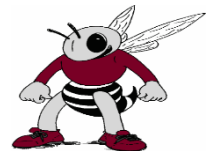
Date: _____

Parent Signature: _____

Date: _____

Principal Signature: _____

Date: _____



Options and Requirements
For Providing Assistance to Students Who Have Learning
Difficulties or Who Need or May Need Special Education

If a child is experiencing learning difficulties, the parent may contact the person listed below to learn about the district's overall general education referral or screening system for support services. This system links students to a variety of support options, including referral for a special education evaluation. Students having difficulty in the regular classroom should be considered for tutorial, compensatory, and other support services that are available to all students.

At any time, a parent is entitled to request an evaluation for special education services. Within a reasonable amount of time, the district must decide if the evaluation is needed. If evaluation is needed, the parent will be notified and asked to provide consent for the evaluation. The district must complete the evaluation and the report within 45 school days of the date the district receives the written consent. The district must give a copy of the report to the parent.

If the district determines that the evaluation is not needed, the district will provide the parent with a written notice that explains why the child will not be evaluated. This written notice will include a statement that informs the parent of their rights if they disagree with the district. Additionally, the notice must inform the parent how to obtain a copy of the *Notice of Procedural Safeguards - Rights of Parents of Students with Disabilities*.

The designated person to contact regarding options for a child experiencing learning difficulties or a referral for evaluation for special education is:

Contact Person: Dr. Jeannette Elliott, Curriculum Supervisor
Flour Bluff Primary Phone: 694-9688

Opciones y requisitos

para proporcionar ayuda a los estudiantes que tienen dificultades en el aprendizaje o que necesitan o pueden necesitar educación especial

Si un niño está experimentando dificultades en el aprendizaje, el padre puede comunicarse con la persona mencionada más arriba para enterarse sobre el sistema de estudios de diagnóstico y de apoyo. Este sistema conecta a los estudiantes con una variedad de opciones de apoyo, incluyendo la recomendación para una evaluación para educación especial. Los estudiantes que tienen dificultades en el aula normal deberán ser considerados para tutoría, servicios compensatorios y otros servicios de apoyo disponibles para todos los estudiantes.

En cualquier momento, un padre tiene derecho a solicitar una evaluación para los servicios de educación especial. Dentro de un período de tiempo razonable, el distrito debe decidir si la evaluación es necesaria. Si la evaluación es necesaria, el padre será notificado, y se le pedirá acceder para la evaluación. El distrito debe completar la evaluación y le informe dentro de los 45 días escuela desde la fecha en que el distrito reciba el acceso por escrito. El distrito debe darle una copia del reportaje al padre.

Si el distrito determina que la evaluación no es necesaria, el distrito proporcionará al padre una notificación por escrito que explica el motivo por el cual el niño no será evaluado. Esta notificación por escrito incluirá información que le explica al padre los derechos que tiene si no está de acuerdo con el distrito. Además, la notificación debe informar al padre la manera de obtener una copia de la *Notificación de las Salvaguardas del Procedimiento - Derecho de los Padres de Estudiantes con Discapacidades*.

La persona designada con quien puede comunicarse en relación a las opciones que tiene un niño que experimenta dificultades en el aprendizaje, o para una recomendación evaluación para educación especial es:

Contact Person: Dr. Jeannette Elliott, Curriculum Supervisor
Flour Bluff Primary Numero de telefono: 694-9688