

# FLOUR BLUFF INTERMEDIATE

## Campus Improvement Plan

### 2022/2023

*Faith, Family, Fun*



Sal Alvarado  
377 Hustlin' Hornet  
361-694-9499  
salvarado@flourbluffschoools.net

Date Reviewed:

DMAC Solutions ®

Page 1 of 61

Date Approved:

2/8/2024

# FLOUR BLUFF INTERMEDIATE

## **Mission**

*The mission of the Hornet community is to foster and empower students to become confident, productive member of society who pursue excellence with integrity.*

## **Vision**

*Our vision is to make Flour Bluff ISD the premier district in Texas.  
Flour Bluff-North Padre Island-NAS/CCAD*

### Nondiscrimination Notice

FLOUR BLUFF INTERMEDIATE does not discriminate on the basis of race, color, national origin, sex, or disability in providing education services, activities, and programs, including vocational programs, in accordance with Title VI of the Civil Rights Act of 1964, as amended; Title IX of the Educational Amendments of 1972; and section 504 of the rehabilitation Act of 1973; as amended.

## **Goals for Flour Bluff Intermediate:**

Goal 1: Students: Well-being and Academic Success

Goal 2: Faculty and Staff: Well-being, Professional Development and Growth

Goal 3: Community Satisfaction and Engagement

Goal 4: Financial Stewardship

# Intermediate SBDM Committee

Name	Position
Alvarado, Sal	Campus Principal
Beauregard, Mandy	Curriculum Supervisor
Foutch, Christine	Secretary
Peacock, Sherrell	Teacher
Augsburger, Lauren	Teacher
Stoner, Suzanne	Teacher
Forney, Alison	Teacher
Wilson, Kristin	Teacher
Dial, Stacy	Teacher
Martinez, Lynn	Teacher
Moorer, Terri	Teacher
Martin, Jeanice	Teacher
Walker, Albert	Teacher
Santos, Kristian	Business Representative
Boughton, Elaine	Community Representative
Salinas, Lily	Business Representative
Huckabee, Chad	Community Representative
Salinas, Mario	Director of Technology
Ponce, Michelle	Parent
Avery, Deb	Parent
Canavati, Sam	Parent
Canavati, Missy	Parent
Franks, Cindy	Community Representative
Carden, Dora	Business Representative
Evans, Dawn	Nurse
Cade, Staci	Administrator

# FLOUR BLUFF INTERMEDIATE

**Goal 1.** (Goal 1.) (Students) Students: Well-being and Academic Success

**Objective 1.** (Objective 1.) (SEL) 1.1 Annually Increase Social, Emotional Learning (SEL) & Well-being

Activity/Strategy	Person(s) Responsible	Timeline	Resources	Evaluation
1. The Intermediate Campus Counselors will provide instructional guidance lessons to classes through the school year. The Counselor will meet with students in a variety of setting to provide guidance, individual and small group. Administrators and Counselor will monitor students who are at risk of developing or have developed issues that affect their wellbeing. In addition, when applicable families in need will be provided with outside resources such as counseling, medical needs, etc. (Target Group: All)	Assistant Principal(s), Counselor(s), Curriculum Supervisor, Director of Facilities, Principal, Principal(s)	2023-2024	(L)GT 6200 - \$10,425, (S)ESL - \$2,500	Criteria: Student Survey Results Positivity Project Counseling Logs Discipline Reports and Data Meetings Attendance Reports Bullying Reports Guidance Activities/Lessons  05/23/23 - On Track 09/12/22 - On Track 08/31/22 - On Track 02/17/22 - On Track 02/14/22 - On Track 11/14/21 - On Track

# FLOUR BLUFF INTERMEDIATE

**Goal 1.** (Goal 1.) (Students) Students: Well-being and Academic Success

**Objective 2.** (Objective 2.) (Four Core Academic Areas) 1.2 Annually increase the Academic Achievement in the four academic areas. Reading Language Arts, Mathematics, Science and Social Studies.

Activity/Strategy	Person(s) Responsible	Timeline	Resources	Evaluation
1. The Intermediate Campus will ensure the TEKS will be effectively and diligently taught using the district curriculum. The Intermediate Campus implements a viable curriculum that involves active student participation, problem solving, creativity, higher order questions, and differentiation. The campus will provide resources and trainings to support students and teachers including differentiated instruction, teacher created assessments, vertical alignment, weekly professional learning communities, cross curricular activities, accelerated instruction, various technology tool, resources, and instruction. (Target Group: All)	Assistant Principal(s), Case Manager(s), Curriculum Supervisor, Librarian(s), Teacher(s)	2022-2023	(F)Title I 6200 - \$10,150, (F)Title I 6300 - \$11,500, (F)Title I 6400 - \$4,118, (L)GT 6200 - \$15,000, (S)ESL - \$2,500, (S)SCE 6400 - \$1,275	05/23/23 - On Track 08/31/22 - On Track 02/17/22 - On Track 02/15/22 - On Track 11/14/21 - On Track

# FLOUR BLUFF INTERMEDIATE

**Goal 1.** (Goal 1.) (Students) Students: Well-being and Academic Success

**Objective 3.** (Objective 3.) (CCMR) Annually increase CCMR results

Activity/Strategy	Person(s) Responsible	Timeline	Resources	Evaluation
1. The Intermediate Campus will implement the College and Career Readiness Standards by 1) Focusing, throughout the curriculum, on College & Career Readiness Standards strategies, including organization, time management, goal setting, and note-taking. 2) Utilizing College & Career Readiness Strategies consistently in the classroom, including writing about future goals, utilizing higher level skills through questioning and note-taking, and researching possible colleges. 3) Holding a College Spirit Day. 4) Decorating the school with college banners, and 5) Providing Professional Learning Community sessions on College and Career Readiness Strategies. (Title I SW Elements: 1.1,2.2,2.4,2.5) (Target Group: 5th,6th) (Strategic Priorities: 2,3,4) (Target Group: 5th,6th)	Assistant Principal(s), Counselor(s), Curriculum Supervisor, Department Head(s), Librarian(s), Principal, Special Ed Teacher(s), Teacher(s)	2022-2023	(F)Title I 6200, (F)Title I 6400, (L)GT 6200 - \$10,000	Criteria: Criteria: Guidance lessons, Test Scores, Meetings, Agenda/Minutes, Sign-In Sheets, Lesson Plans, Grades, College & Career Readiness Strategies, Assessment Data Reports, Open House, and NJROTC.  05/23/23 - On Track 09/15/22 - On Track 02/17/22 - On Track 11/14/21 - On Track

# FLOUR BLUFF INTERMEDIATE

**Goal 1.** (Goal 1.) (Students) Students: Well-being and Academic Success

**Objective 4.** (Objective 4.) (Student Engagement) Annually increase Student Engagement

Activity/Strategy	Person(s) Responsible	Timeline	Resources	Evaluation
1. The Intermediate campus will provide the resources, trainings, and support for student engagement. The campus will implement and provide the means for students to stay informed through means such as Google Classrooms, teacher web pages, and social media. Students will be informed and encouraged to join extracurricular activities and clubs. The campus will promote Pre-Athletics, Open House, UIL Teams and campus clubs such as Intermediate Live, Jr. Master Naturalist, Running Club, Drama Club, Journalism Club, Robotics Club, Math Team, Science Team, Student Council, and Chess Club. The campus will provide students with the opportunities for educational field trips such as Wetlands, Nueces Delta Preserve and various performances. (Target Group: 5th,6th)	Assistant Principal(s), Curriculum Supervisor, Department Head(s), Principal, Special Ed Teacher(s), Teacher(s)	2022-2023	(F)Title I 6400, (L)GT 6200 - \$5,000	Criteria: Criteria: Club/Organization, Enrollment Rosters, Club Flyers, Notice to Parents, Teacher Sponsors, Calendar of Events, Print Materials, Display on Hallway Monitors, Campus Announcements/Intermediate Live Announcements, Pre-Athletic Rosters  05/23/23 - On Track 09/06/22 - On Track 02/17/22 - On Track 11/14/21 - On Track



# FLOUR BLUFF INTERMEDIATE

**Goal 2.** (Goal 2.) (Facility and Staff) Faculty and Staff. Well-being, Professional Development and Growth

**Objective 1.** (Objective 1.) Annually Increase Faculty and Staff Engagement

Activity/Strategy	Person(s) Responsible	Timeline	Resources	Evaluation
1. The Intermediate Campus will have Professional Learning Community (PLC) Meetings as a department and as a POD, to include paraprofessionals, four times per six weeks. Turn in PLC minutes to be reviewed by administration, provide a mentor teacher to all new teachers/new hires. Mentors will meet with their mentee teacher at least two times per six weeks and as needed thereafter. The campus promotes an open door policy that creates an environment where staff can voice concerns, questions and collaboration. (Title I SW Elements: 1.1,2.2,2.5,2.6,3.2) (Target Group: All,5th,6th) (Strategic Priorities: 1,2,3,4)	Assistant Principal(s), Curriculum Supervisor, Department Head(s), Principal, Special Ed Teacher(s), Teacher(s)	2022-2023	(L)GT 6200 - \$10,000, (S)SCE 6300 - \$3,782.50	Criteria: Criteria: PLC Agendas/Minutes, Sign-In Sheets, Quality Lesson Plans, Quality Lessons, STAAR Performance, Teacher feedback.  05/23/23 - On Track 02/17/22 - On Track 11/14/21 - On Track

# FLOUR BLUFF INTERMEDIATE

**Goal 2.** (Goal 2.) (Facility and Staff) Faculty and Staff. Well-being, Professional Development and Growth

**Objective 2.** (Objective 2.) Annually increase Faculty and Staff Satisfaction

Activity/Strategy	Person(s) Responsible	Timeline	Resources	Evaluation
1. The Intermediate campus will validate, acknowledge, recognize and collaborate with faculty and staff to create a culture of excellence on our campus. (Target Group: All) (Strategic Priorities 1,2,3) (Target Group: All)	Assistant Principal(s), Curriculum Supervisor, Principal, Public Information Coordinator, Teacher(s)	2022-2023	(L)GT 6200, (S)SCE 6100, (S)SCE 6200 - \$4,300, (S)State Comp. Ed.	Criteria: Criteria: Data Meetings, Shout Out Wall, Fluid Department Agendas, Employee Awards, List of Accomplishments, Campus/District Website, Social Media Pages  05/23/23 - On Track 02/17/22 - On Track 11/14/21 - On Track

# FLOUR BLUFF INTERMEDIATE

**Goal 2.** (Goal 2.) (Faculty and Staff) Faculty and Staff. Well-being, Professional Development and Growth

**Objective 3.** (Objective 3.) Professional Development Plans are developed and executed for ALL Categories of Employees

Activity/Strategy	Person(s) Responsible	Timeline	Resources	Evaluation
1. The Intermediate Campus will align professional development trainings with the district. (Target Group: All) (Strategic Priorities: 2,3)	Assistant Principal(s), Counselor(s), Curriculum Supervisor, Principal	2022-2023	(F)Title II 6200 - \$2,100, (F)Title II 6300 - \$400, (F)Title II 6400 - \$3,300, (L)GT 6200 - \$5,000	Criteria: Criteria: Agendas/Minutes, Sign in Sheets, Professional Development, Campus Calendar  05/23/23 - On Track 02/17/22 - On Track 11/14/21 - On Track

# FLOUR BLUFF INTERMEDIATE

**Goal 2.** (Goal 2.) (Facility and Staff) Facility and Staff. Well-being, Professional Development and Growth

**Objective 4.** (Objective 4.) Develop and implement an Annual Plan for Campus and Departmental Personnel on Procurement and Other Business Processes

Activity/Strategy	Person(s) Responsible	Timeline	Resources	Evaluation
1. The Intermediate campus will align with the district regarding procurement and other business processes. (Target Group: All) (Strategic Priorities: 1)	Advisory/Community/Partnership Committees, Assistant Principal(s), Curriculum Supervisor, Principal, Teacher(s)	2022-2023	(L)GT 6200	Criteria: Criteria: Agendas/Minutes, Sign in Sheets, Training Calendar, SBDM Meetings  05/23/23 - On Track 02/17/22 - On Track 11/14/21 - On Track

# FLOUR BLUFF INTERMEDIATE

**Goal 3.** (Goal 3.) (Community) Community Satisfaction and Engagement

**Objective 1.** (Objective 1.) Annually increase Non-Parent Community Satisfaction

Activity/Strategy	Person(s) Responsible	Timeline	Resources	Evaluation
<p>1. The Intermediate campus will communicate the following with the community: Awards, milestones, student and staff recognition and upcoming events.</p> <p>The campus will offer and encourage community feedback. (Target Group: All) (Strategic Priorities: 1,2,3)</p>	Assistant Principal(s), Chief Communications Officer, Curriculum Supervisor, Principal, Teacher(s)	2022-2023	(L)GT 6200 - \$2,500	<p>Criteria: Criteria: Agendas/Minutes, Social media, Community Events, Campus Website, Flyers, Surveys, Social Media</p> <p>05/23/23 - On Track 02/17/22 - On Track 11/14/21 - On Track</p>

# FLOUR BLUFF INTERMEDIATE

**Goal 3.** (Goal 3.) (Community) Community Satisfaction and Engagement

**Objective 2.** (Objective 2.) Annually increase Non-Parent Community Engagement

Activity/Strategy	Person(s) Responsible	Timeline	Resources	Evaluation
1. The Intermediate Campus will partner with the following community, company representatives; HEB for Share Your Christmas and school supplies, Coastal Bend Food Bank, Master Naturalists. (Target Group: 5th,6th)	Advisory/Community/Partnership Committees, Assistant Principal(s), Counselor(s), Curriculum Supervisor, Principal, Teacher(s)	2022-2023	(L)GT 6200 - \$1,000	Criteria: Criteria: Partnership Meetings, Partnership Agreements, and Services Provided  05/23/23 - On Track 02/17/22 - On Track 11/14/21 - On Track

# FLOUR BLUFF INTERMEDIATE

**Goal 3.** (Goal 3.) (Community) Community Satisfaction and Engagement

**Objective 3.** (Objective 3.) Annually Increase Parent Satisfaction

Activity/Strategy	Person(s) Responsible	Timeline	Resources	Evaluation
1. Status of student's progress, upcoming events, awards, student/staff recognitions, and any changes in schedule and or event. The campus will offer opportunities for feedback.	Advisory/Community/Partnership Committees, Assistant Principal(s), Case Manager(s), Counselor(s), Curriculum Supervisor, Principal, Teacher(s)	2022-2023	(L)GT 6200 - \$500	Criteria: Criteria: Community Events, Campus Website, Flyers, Surveys, Social Media, phone calls, and email messages  05/23/23 - On Track 02/17/22 - On Track 11/14/21 - On Track

# FLOUR BLUFF INTERMEDIATE

**Goal 3.** (Goal 3.) (Community) Community Satisfaction and Engagement

**Objective 4.** (Objective 4) The Intermediate campus will increase parent participation and satisfaction by involving parents in the following events: Encouraging parents to access teacher web pages, skyward, Remind 101, Class Dojo, Group Me. Inviting parents to Open House, Meet the Teacher and Sneak Peak. Providing opportunities for parents to conference with teachers, sign up for PTO and join the volunteer program.

Activity/Strategy	Person(s) Responsible	Timeline	Resources	Evaluation
1. The Intermediate campus will increase parent participation and satisfaction by involving parents in the following events: Encouraging parents to access teacher web pages, skyward, Remind 101, Class Dojo, Group Me. Inviting parents to Open House, Meet the Teacher and Sneak Peak. Providing opportunities for parents to conference with teachers, sign up for PTO and join the volunteer program.	Advisory/Community/Partnership Committees, Assistant Principal(s), Chief Communications Officer, Counselor(s), Curriculum Supervisor, Principal, Teacher(s)	2022-2023	(L)GT 6200 - \$1,500	Criteria: Criteria: Community Events, Campus Website, Teacher Webpages, Flyers, Surveys, Social Media, phone calls, email messages, parent conferences, Calendar, Sign-In sheets  05/23/23 - On Track 02/17/22 - On Track 11/14/21 - On Track



# FLOUR BLUFF INTERMEDIATE

**Goal 4.** (Goal 4.) (Financial) Financial Stewardship

**Objective 1.** (Objective 1.) Increase communication and clarity regarding the Coherent Budget Development, Adoption, and Management Processes

Activity/Strategy	Person(s) Responsible	Timeline	Resources	Evaluation
1. The Intermediate Campus will ensure that all sponsors and administration collaborate with the district to follow proper procedures to utilize campus funds. (Target Group: All)	Advisory/Community/Partnership Committees, Assistant Principal(s), Curriculum Supervisor, Principal	2022-2023	(S)SCE 6400	<p>Criteria: Criteria:            SBDM Meetings, Agendas, Sign-In Sheets, Board Reports, Usage Reports, Budget Reports, Personnel Reports, Maintenance and Transportation Reports, Child Nutrition Reports, Purchase Reports</p> <p>05/23/23 - On Track            02/17/22 - On Track            02/14/22 - On Track            11/14/21 - Some Progress</p>

# FLOUR BLUFF INTERMEDIATE

**Goal 4.** (Goal 4.) (Financial) Financial Stewardship

**Objective 2.** (Objective 2.) Increase communication and clarity regarding the Coherent Debt Management Process(es)

Activity/Strategy	Person(s) Responsible	Timeline	Resources	Evaluation
1. The Intermediate Campus will ensure that all sponsors and administration collaborate with the district to follow proper procedures to utilize campus funds. (Target Group: All)	Advisory/Community/Partnership Committees, Assistant Principal(s), Curriculum Supervisor, Principal	2022-2023	(S)SCE 6400	<p>Criteria: Criteria:            SBDM Meetings, Agendas, Sign-In Sheets, Board Reports, Usage Reports, Budget Reports, Personnel Reports, Maintenance and Transportation Reports, Child Nutrition Reports, Purchase Reports</p> <p>05/23/23 - On Track            02/17/22 - On Track            02/14/22 - Pending            02/14/22 - On Track            11/14/21 - Some Progress</p>

# FLOUR BLUFF INTERMEDIATE

**Goal 4.** (Goal 4.) (Financial) Financial Stewardship

**Objective 3.** (Objective 3.) Increase communication and clarity regarding Operational Effectiveness and Efficiency

Activity/Strategy	Person(s) Responsible	Timeline	Resources	Evaluation
1. The Intermediate Campus will ensure that all sponsors and administration collaborate with the district to follow proper procedures to utilize campus funds. (Target Group: All)	Advisory/Community/Partnership Committees, Assistant Principal(s), Curriculum Supervisor, Principal	2022-2023	(S)SCE 6400	<p>Criteria: Criteria:            SBDM Meetings, Agendas, Sign-In Sheets, Board Reports, Usage Reports, Budget Reports, Personnel Reports, Maintenance and Transportation Reports, Child Nutrition Reports, Purchase Reports</p> <p>05/23/23 - On Track            02/17/22 - On Track            02/14/22 - On Track            11/14/21 - Some Progress</p>

# FLOUR BLUFF INTERMEDIATE

**Goal 4.** (Goal 4.) (Financial) Financial Stewardship

**Objective 4.** (Objective 4) Increase communication and clarity for Critical Success Factors of Financial Stewardship

Activity/Strategy	Person(s) Responsible	Timeline	Resources	Evaluation
1. The Intermediate Campus will ensure that all sponsors and administration collaborate with the district to follow proper procedures to utilize campus funds. (Target Group: All)	Advisory/Community/Partnership Committees, Assistant Principal(s), Curriculum Supervisor, Principal	2022-2023	(S)SCE 6400	<p>Criteria: Criteria:            SBDM Meetings, Agendas, Sign-In Sheets, Board Reports, Usage Reports, Budget Reports, Personnel Reports, Maintenance and Transportation Reports, Child Nutrition Reports, Purchase Reports</p> <p>05/23/23 - On Track            02/17/22 - On Track            02/14/22 - On Track            11/14/21 - Some Progress</p>

# Comprehensive Needs Assessment

## Demographics

### Demographics Strengths

Flour Bluff Intermediate has:  
Strong Special Education program  
Accelerated learning plans and committees for students who are at-risk  
Mentor Programs for students and teachers  
Pre-Athletics  
UIL Teams  
Sponsored Clubs

### Demographics Weaknesses

Campus enrollment increased by 40 students. In 2021-2022 794 students were enrolled and in 2022-2023, 834 students are enrolled.

### Demographics Needs

The campus will continue to provide programs to support and attract new students.

### Demographics Summary

Flour Bluff Intermediate is a Title 1 Campus. We are comprised of 834 students in grades 5 and 6, with 16 5th grade core classroom teachers and 16 6th grade core classroom teachers. In addition, the Intermediate Campus has one self-contained classroom and four basic and applied classrooms. At the Intermediate, we are culturally diverse with 337 White; 417 Hispanic; 18 Black; 20 Asian; 1 American Indian; 2 Native Hawaiian; and 39 Multi-Race students. In addition, approximately 46% of students are classified as Economically Disadvantaged. There is a total of 78 faculty and staff members, including teachers, administrators, paraprofessionals, and support staff.

## Student Achievement

# Comprehensive Needs Assessment

## Student Achievement Strengths

The Intermediate Campus was rated an “A” campus on the 2022 Accountability Rating with an overall score of a 93.

## Student Achievement Weaknesses

The Intermediate campus strives to increase student’s growth and scores in Meets and Masters in Math, ELAR, and Science for all students.

## Student Achievement Needs

Improve STAAR scores and growth in Math, ELAR, and Science.

## Student Achievement Summary

2021-2022 STAAR performance.

5th/6th Grade Math; Approaches, Meets, Masters

ALL: 86%, 54%, 26%

Hispanic: 84%, 47%, 17%

Asian: 94%, 81%, 69%

African American: 75%, 4%, 6%

Islander: 100%, 83%, 67%

White: 89%, 59%, 33%

Two or More Races: 81%, 65%, 32%

Economically Disadvantaged: 80%, 42%, 16%

Limited English Proficient: 86%, 43%, 20%

Gifted and Talented: 99%, 96%, 78%

Special Education: 65%, 25%, 10%

# Comprehensive Needs Assessment

## Student Achievement Summary (Continued)

5th /6th Grade Reading Language Arts; Approaches, Meets, Masters

ALL: 83%, 60%, 39%

Hispanic: 79%, 54%, 34%

Asian: 100%, 88%, 69%

African American: 88%, 58%, 29%

Islander: 100%, 83%, 50%

White: 89%, 63%, 44%

Two or More Races: 81%, 68%, 45%

Economically Disadvantaged: 74%, 48%, 27%

Limited English Proficient: 83%, 47%, 27%

Gifted and Talented: 100%, 98%, 88%

Special Education: 43%, 25%, 14%

5th Grade Science: Approaches, Meets, Masters

ALL: 87%, 59%, 32%

Hispanic: 83%, 52%, 25%

Asian: 100%, 100%, 33%

African American: 75%, 50%, 0%

Islander: 67%, 67%, 33%

White: 92%, 66%, 41%

Two or More Races: 84%, 63%, 42%

Economically Disadvantaged: 80%, 48%, 23%

Limited English Proficient: 83%, 58%, 32%

Gifted and Talented: 100%, 96%, 73%

Special Education: 64%, 26%, 9%

## School Culture and Climate

### School Culture and Climate Strengths

# Comprehensive Needs Assessment

The Intermediate strengths are:

All core classes have ninety minutes of instruction. - Positivity Project is a focus of guidance lessons. - Support programs are in place to assist Students: Title 1 Tutoring for Math and Reading throughout the school day, built-in teacher tutorials, and after school tutoring. The Intermediate Campus offers a variety of extracurricular clubs such as: Intermediate Live, Student Council, Running Club, Nature Club, Math Club, Book Club, Chess Club, Art Club, Journalism, Drama/Theater Arts Club, and UIL Academic Teams. The extracurricular clubs are in place to help develop well-rounded students who can enhance their learning to improve leadership, socialization, and academic skills by working together. Students have the opportunity to join Intermediate Live where they manage and lead morning announcements, developing their communication and leadership skills. Flour Bluff Intermediate faculty participate in Professional Learning Communities (PLC) and collaborate to encourage problem solving and critical thinking.

## School Culture and Climate Weaknesses

The Intermediate campus struggles with the effects of COVID-19 and the results of student educational and emotional gaps.

## School Culture and Climate Needs

Due to the challenges from COVID-19, the campus needs to provide additional training, support, and flexibility for students and staff to address all needs.

## School Culture and Climate Summary

Flour Bluff Intermediate strives to provide a positive school culture and climate. We treat all people with dignity and respect. Our teachers are provided with the time to plan instruction, through bi-weekly Professional Learning Communities (PLC) meetings and designated Professional Development throughout the school year. In addition, we provide many opportunities for teachers and staff to meet with parents to obtain information about classroom instruction and student progress in the academic setting.

## Staff Quality, Recruitment and Retention



# Comprehensive Needs Assessment

## **Staff Quality, Recruitment and Retention Strengths**

Flour Bluff Intermediate provides Professional Development to teachers and staff throughout the school year. Teacher mentors are provided to every new teacher on the campus. The number of certified English As a Second Language (ESL) teachers is increasing. The district/campus utilizes Talent Ed as a tool for applicants to apply online for all available positions at Flour Bluff ISD/Flour Bluff Intermediate. The campus requires applicants to teach a lesson to students as part of the interview process.

## **Staff Quality, Recruitment and Retention Weaknesses**

The campus will align with the district to continue to strive in offering competitive compensations and benefit packages to retain and recruit teachers. The campus will support teachers by providing content specific Professional Development.

## **Staff Quality, Recruitment and Retention Needs**

New Teachers and Veteran Teachers continue to need support and guidance.

## **Staff Quality, Recruitment and Retention Summary**

Flour Bluff Intermediate faculty and staff are 100% highly qualified. Developing and increasing the capacity of our professional staff is a priority at Flour Bluff Intermediate. All staff are trained at both the campus and district level annually to ensure sustainability.

# Curriculum, Instruction and Assessment

## **Curriculum, Instruction and Assessment Strengths**

Flour Bluff Intermediate maintains quality curriculum and instruction through:  
Department meetings, grade level meetings, team meetings, and faculty meetings are organized and follow the PLC process to establish a

# Comprehensive Needs Assessment

## Curriculum, Instruction and Assessment Strengths (Continued)

climate and environment of collaboration to improve instruction and student engagement. Teachers have the opportunity to plan and collaborate throughout the school year. Assessments, formative and summative, are given and analyzed to monitor the progress of students and help guide instruction. Many Flour Bluff Intermediate teachers are certified in more than one subject area which allows for co-teaching, more opportunities for small group instruction and additional instructional support in the classroom.

## Curriculum, Instruction and Assessment Weaknesses

Students continue to struggle academically and emotionally . Teachers are struggling to meet the needs of all students as the strive to close the gaps. In addition, teachers are struggling with implementing the Year at a Glance that was prepared during summer curriculum writing.

## Curriculum, Instruction and Assessment Needs

To address the weakness, the campus will allocate PLC opportunities that address the changes in the curriculum. Department leads will collaborate with their team to reflect, adjust, and problem-solve.

## Curriculum, Instruction and Assessment Summary

Flour Bluff Intermediate teachers utilize a wide array of resources to effectively teach the Texas Essential Knowledge and Skills (TEKS) in all core subject areas: Mathematics, ELAR/Reading, Science, and Social Studies. Implementation of the TEKS standards is accomplished through Professional Learning Communities (PLC), vertical alignment, curriculum writing sessions, scaffolding, and through the campus curriculum supervisor. Administrators, teachers, and district administrators all contribute to the preparation and evaluation of the instructional lessons and assessments. In addition, data meetings with the principal and curriculum supervisor are held every six weeks to discuss academic concerns and celebrations about students and/or instruction.

## Family and Community Involvement

# Comprehensive Needs Assessment

## Family and Community Involvement Strengths

Flour Bluff Intermediate Campus encourages and supports family and community involvement through various activities such as: Open House and Family Nights. Flour Bluff Intermediate also works in a partnership with Texas A&M to host a Math and Science Family Night during the school year. Flour Bluff Intermediate received a Purple Star Campus Designation Award for supporting the unique needs of military-connected students and their families. Flour Bluff Intermediate re-applied for the Purple Star Campus Designation Award for the 2022-2023 school year.

## Family and Community Involvement Weaknesses

The Intermediate campus will continue to improve parent involvement and engagement.

## Family and Community Involvement Needs

The Intermediate campus would like to increase percentage of parent involvement.

## Family and Community Involvement Summary

The Flour Bluff Intermediate Campus continues to make family and parent involvement a top priority by keeping up-to-date on communications with parents/guardians in regards to their student's academic and social progress.

# School Context and Organization

## School Context and Organization Strengths

Tutoring occurs for Reading, Math, and 5th grade Science classes during the school day. After school tutorials are available for all students. Positive Behavior Intervention Support (PBIS) initiative and Positivity Project is implemented to provide positive behavior that builds and enhances students' overall social skills. Flour Bluff Intermediate Counselor provides social/emotional counseling to students in need.

# Comprehensive Needs Assessment

## School Context and Organization Weaknesses

The Intermediate campus is proactive in finding innovative and creative ways to support teachers to better serve students with academic and emotional needs.

## School Context and Organization Needs

The campus would like to increase support staff to better assist students and teachers.

## School Context and Organization Summary

The main focus of Flour Bluff Intermediate Campus is to provide a safe, caring, and effective learning environment. In addition, our teachers and staff keep parents and the community informed and involved in school events and classroom activities.

# Technology

## Technology Strengths

Flour Bluff Intermediate Campus continues to keep up-to-date with the latest innovative technology tools via educational online student resources, webinars, virtual classroom lessons, Google Meetings, and Google Classrooms. Flour Bluff Intermediate utilizes technology to efficiently communicate with parents, as well as educators to assist with professional development. Every grade level team (POD) on the campus has a Chromebook cart dedicated to instruction and assessments.

## Technology Weaknesses

Teachers continue to need support and training to effectively utilize technology.

# Comprehensive Needs Assessment

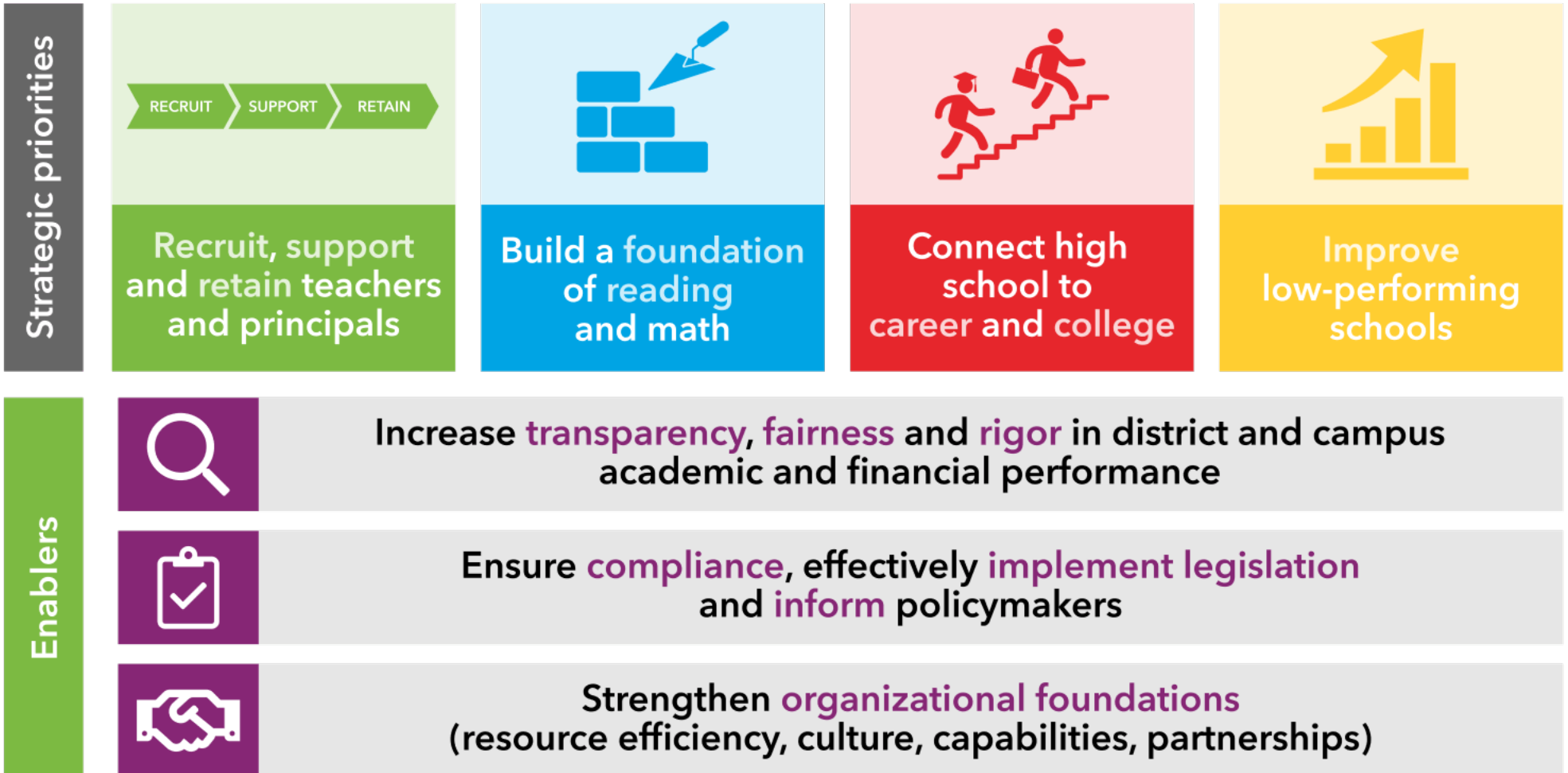
## Technology Needs

The campus needs access and up to date technology to better implement programs for accelerated learning.

## Technology Summary

Technology is a vital tool at the Flour Bluff Intermediate Campus as our students utilize our Smart Boards, Interactive Televisions, Chromebooks, and computer labs daily. The Intermediate campus utilizes Google Classroom as an additional resource for students and parents. In addition, all 5th graders take a semester of technology as part of the Kaleidoscope elective cycle. Flour Intermediate received 550 Chromebooks as a result of the district receiving the ECF grant.

# Every child, prepared for success in college, a career or the military.



*\*adapted from TEA Strategic Plan - <https://tea.texas.gov>*

# Resources

Resource	Source
Title I	Federal
Title II 6200	Federal
Title II 6300	Federal
Title II 6400	Federal
GT 6200	Local
ESL	State
State Comp. Ed.	State

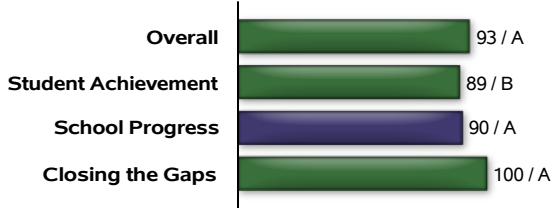
**Texas Education Agency**  
**2021-22 Preliminary School Report Card**  
**FLOUR BLUFF INT (178914105)**

**Accountability Rating**

**A**

FLOUR BLUFF INT earned an A (90-100) for exemplary performance by serving most students well, encouraging high academic achievement and/or appropriate academic growth for almost all students, and preparing most students for eventual success in college, a career, or the military.

State accountability ratings are based on three domains: Student Achievement, School Progress, and Closing the Gaps. The graph below provides summary results for FLOUR BLUFF INT. Scores are scaled from 0 to 100 to align with letter grades.



**School Information**

District Name:	FLOUR BLUFF ISD
Campus Type:	Middle School
Total Students:	794
Grade Span:	05 - 06

For more information about this campus, see: <https://TXSchools.gov>

**Distinction Designations**

Campuses that earn a rating of A-C are eligible for as many as seven distinction designations, or awards for outstanding performance.

- |                                |                               |
|--------------------------------|-------------------------------|
| ✓ ELA/Reading                  | ✓ Mathematics                 |
| ✓ Science                      | ✓ Comparative Academic Growth |
| ✓ Comparative Closing the Gaps | ✓ Postsecondary Readiness     |





# Flour Bluff Intermediate

---

2505 WALDRON ROAD, CORPUS CHRISTI, TEXAS 78418 · PHONE (361) 694-9400 · FLOURBLUFFSCHOOLS.NET

---

Campus-Level Site-Based Decision-Making Committee  
Thursday, September 15, 2022

4:15 p.m.

## Minutes:

- I. Welcome
- II. Review Current Enrollment
  - Currently we serve 834 students.
- III. Review Attendance
  - 5<sup>th</sup> grade is 94.5%
  - 6<sup>th</sup> grade is 94.1%
- IV. Review School Safety Procedures
  - All interior classroom door stay shut throughout the day.
  - All exterior doors automatically lock.
  - Safety Drills
- V. Review Budget
  - ESSER Funds; Elementary and Secondary Emergency Relief grant.
  - Title 1 tutoring
  - Outdoor furniture
  - Supplies that benefit our students
- VI. Professional Development Report
  - CAST in November (Conference for the Advancement of Science Teaching)
  - Katie Doyle is presenting.
- VII. Review Comprehensive Needs Assessment Data
- VIII. Develop Campus Improvement Plan/ Cascading Report Card
- IX. Miscellaneous/ Upcoming Events
  - 9/15/22: Open House (6:00 p.m.-7:00 p.m.), Title 1 Parent Engagement (5:30-6:00 p.m.)  
Pre-Athletics (5:30-6:00 p.m.)
  - 10/3-7/22: Intermediate Book Fair
  - 10/6/22: Chick-fil-A Night (5:00 p.m-8:00 p.m.)

10/10/22 and 10/11/22: School Holidays

10/14/22 Fun Run (launches 10/4/22)

10/17/22; Homecoming Parade (6:00 p.m.)

10/17-21/22: Homecoming Week

10/24-28/22: Red Ribbon Week

10/28/22: Student Holiday

X. Next Meeting: Thursday, November 17, 2022, at 4:15

**Thank you for your continued Support**

**Have a Blessed Evening!**



Participants (15)

Attendance: Meeting via ZOOM; September 15, 2022

Q Find a participant

MB	Mandy Beauregard (Me)		
SA	Salvador Alvarado (Host)		
SD	Stacy Dial		
CE	Caitlyn Espitia		
C	cf9208		
J	jmartin		
LM	LEANN MINNERS		
L	lmartinez		
MR	Marina Rodriguez		
MS	Mario Salinas		
MC	Missy Canavati		
SC	Sam Canavati		
SC	Staci Cade		
VS	Victoria Salinas		
W	w140745		

Christine Foutch (cf9208)

Javier Wiley (w140745)



# **Flour Bluff Intermediate Comprehensive Needs Assessment**

**September 15, 2022**

## **Demographics**

### **Strengths:**

Flour Bluff Intermediate has:

- Strong Special Education program
- Accelerated learning plans and committees for students who are at-risk
- Mentor Programs for students and teachers
- Pre-Athletics
- UIL Teams
- Sponsored Clubs

### **Weaknesses:**

Campus enrollment increased by 40 students. In 2020-2021 the campus had 794 students enrolled. 2022-2023 the campus has 834 students enrolled. The campus would like to increase enrollments and daily attendance.

### **Needs:**

The campus will continue to provide programs to support and attract new students and increase student's daily attendance.

## **Student Achievement**

### **Strengths:**

The Intermediate Campus was rated an "A" campus on the 2022 Accountability Rating with an overall score of a 93.

### **Weaknesses:**

The Intermediate campus strives to increase student's growth and scores in Meets and Masters in Math, ELAR, and Science for all students.

### **Needs:**

Improve STAAR scores and growth in Math, ELAR, and Science.

## **School Culture & Climate**

### **Strengths:**

All core classes have eighty-six minutes of instruction. Positivity Project is a focus of guidance lessons. - Support programs are in place to assist Students: Title 1 Tutoring for Math, Reading and Science throughout the school day, built-in teacher tutorials, after school tutoring, and Saturday school. The Intermediate Campus offers a variety of extracurricular clubs such as: Intermediate Live, Student Council, Running Club, Nature Club, Math Club, Book Club, Chess Club, Art Club, Journalism, Drama/Theater Arts Club, and UIL Academic Teams. The extracurricular clubs are in place to help develop well-rounded students who can enhance their learning to improve leadership, socialization, and academic skills by working together. Students have the opportunity to join Intermediate Live where they manage and lead morning announcements, developing their communication and leadership skills. Flour Bluff Intermediate faculty participates in Professional Learning Communities (PLC) and collaborate to encourage problem solving and critical thinking.

### **Weaknesses:**

The Intermediate campus struggles with the effects of COVID-19 and the results of student educational and emotional gaps.

### **Needs:**

Due to the challenges from COVID-19, the campus needs to provide additional training, support, and flexibility for students and staff to address all needs

## **Staff Quality, Recruitment, and Retention**

### **Strengths:**

Flour Bluff Intermediate provides Professional Development to teachers and staff throughout the school year. Teacher mentors are provided to every new teacher on the campus. The number of certified English As a Second Language (ESL) teachers is increasing. The district/campus utilizes Talent Ed as a tool for applicants to apply online for all available positions at Flour Bluff ISD/Flour Bluff Intermediate. The campus requires applicants to teach a lesson to students as part of the interview process.

### **Weaknesses:**

The campus will align with the district to continue to strive in offering competitive compensations and benefit packages to retain and recruit teachers. The campus will support teachers by providing content specific Professional Development.

### **Needs:**

New Teachers and Veteran Teachers continue to need support and guidance.

## **Curriculum, Instruction and Assessment**

### **Strengths:**

Flour Bluff Intermediate maintains quality curriculum and instruction through: Department meetings, grade level meetings, team meetings, and faculty meetings are organized and follow the PLC process to establish a climate and environment of collaboration to improve instruction and student engagement. Teachers have the opportunity to plan and collaborate throughout the school year. Assessments, formative and summative, are given and analyzed to monitor the progress of students and help guide instruction. Many Flour Bluff Intermediate teachers are certified in more than one subject area which allows for co-teaching, more opportunities for small group instruction and additional instructional support in the classroom.

### **Weakness:**

Students continue to struggle academically and emotionally. Teachers are struggling to meet the needs of all students as they strive to close the gaps. In addition, teachers are struggling with implementing the Year at a Glance that was prepared during summer curriculum writing.

### **Needs:**

To address the weakness, the campus will allocate PLC opportunities that address the changes in the curriculum. Department leads will collaborate with their team to reflect, adjust, and problem-solve.

## **Family & Community Involvement**

### **Strengths:**

Flour Bluff Intermediate Campus encourages and supports family and community involvement through various activities such as: Open House and Family Nights. Flour Bluff Intermediate also works in a partnership with Texas A&M to host a Math and Science Family Night during the school year. 2020-2021, Flour Bluff Intermediate received a Purple Star Campus Designation Award for supporting the unique needs of military-connected students and their families. 2021-2022, the campus re-applied for the Purple Star Campus Designation Award.

### **Weaknesses:**

The Intermediate campus will continue to improve parent involvement and engagement.

### **Needs:**

The Intermediate campus would like to increase percentage of parent involvement.

## **School Context & Organization**

### **Strengths:**

Tutoring occurs for Reading, Math, and 5th grade Science classes during the school day. After school tutorials are available for all students. Positive Behavior Intervention Support (PBIS) initiative and Positivity Project is implemented to provide positive behavior that builds and enhances students' overall social skills. Flour Bluff Intermediate Counselor provides social/emotional counseling to students in need.

### **Weaknesses:**

The Intermediate campus would like to increase support staff to assist teachers with student academic and emotional needs.

### **Needs:**

The campus is trying to find innovative and creative ways to support teachers to better assist students with academic and emotional needs.

## **Technology**

### **Strengths:**

Flour Bluff Intermediate Campus continues to keep up-to-date with the latest innovative technology tools via educational online student resources, webinars, virtual classroom lessons, Google Meetings, and Google Classrooms. Flour Bluff Intermediate utilizes technology to efficiently communicate with parents, as well as educators to assist with professional development. Every grade level team (POD) on the campus has a Chromebook cart dedicated to instruction and assessments. Flour Bluff ISD is the recipient of a Chromebook Grant. Due to the grant, the campus received 550 chrome books for students to use throughout the school year.

### **Weaknesses:**

Teachers continue to need support and training to effectively utilize technology.

### **Needs:**

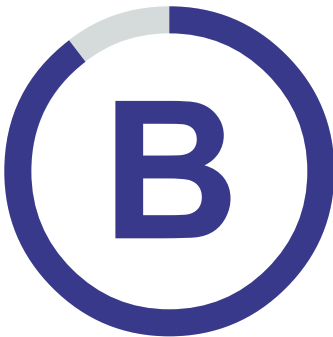
The campus needs access and up to date technology to better implement programs for accelerated learning.





# STUDENT ACHIEVEMENT

## Rating



89 out of 100

Student Achievement measures whether students met expectations on the STAAR test. It also measures graduation rate and how prepared students are for success after high school.

TELL ME MORE

## Student Achievement Calculation

Component	Score	% of Grade
STAAR Performance	89	100%
Total		100%

TELL ME MORE



## Student Achievement Summary

# FLOUR BLUFF INT

District: Flour Bluff ISD

PROFILE    OTHER RESOURCES ▾

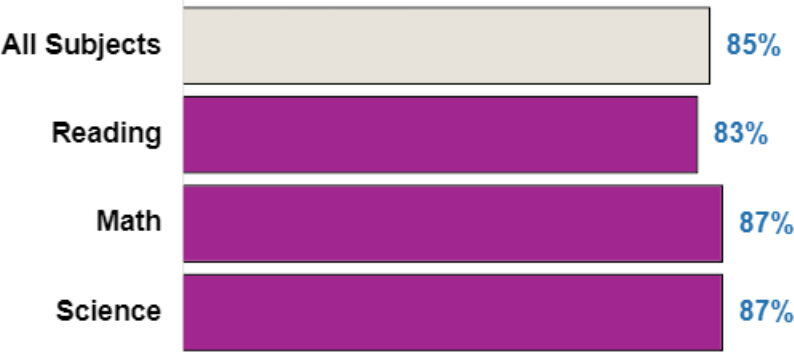
out of 100

STAAR Performance measures achievement at Approaches Grade Level or above, Meets Grade Level or above, and Masters Grade Level on the STAAR test.

TELL ME MORE

### STAAR Performance Details

#### Percentage of Students Approaching Grade Level or Above



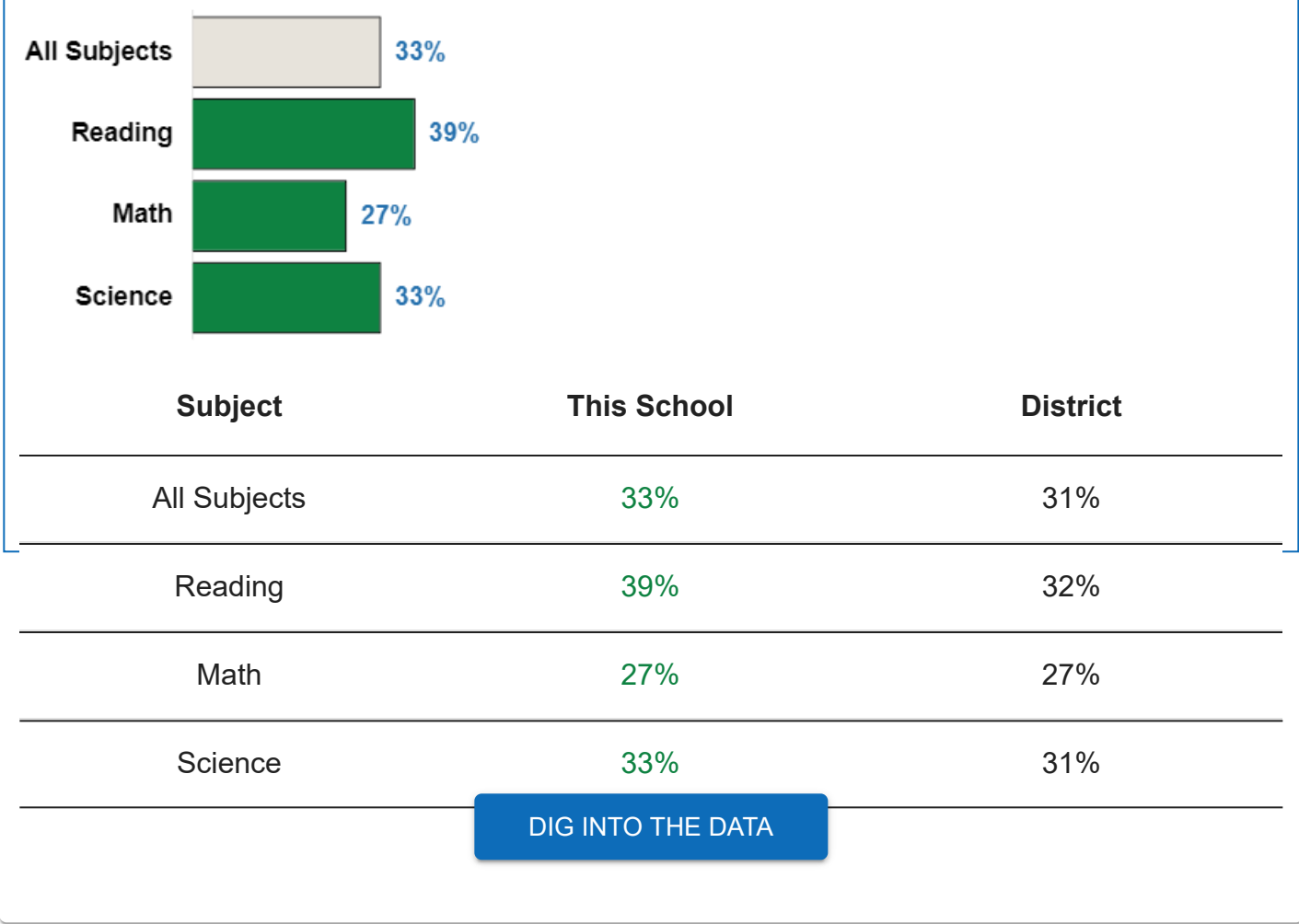
Subject	This School	District
All Subjects	85%	84%
Reading	83%	85%
Math	87%	82%
Science	87%	87%

## Percentage of Students Meeting Grade Level or Above



Subject	This School	District
All Subjects	58%	59%
Reading	61%	64%
Math	55%	53%
Science	61%	61%

## Percentage of Students Mastering Grade Level or Above



Texas Education Agency  
1701 N. Congress Avenue  
Austin, Texas, 78701  
(512) 463-9734  
Map | Site Policies | Sitemap

Fraud Hotline  
Frequently Asked Questions  
Governor's Committee On People With Disabilities  
Homeland Security

Compact with Texans  
Complaints  
ESC's  
Equal Educational Opportunity

Public Information Requests  
State of Texas  
Texas Legislature  
Texas Veterans Portal

Homeland Security

TEXAS VETERANS FORUM

Military Families

Trail

Where Our Money Goes

---

Copyright © 2007-2022 Texas Education Agency (TEA). All Rights Reserved.



# Flour Bluff Intermediate

---

2505 WALDRON ROAD, CORPUS CHRISTI, TEXAS 78418 · PHONE (361) 694-9400 · FLOURBLUFFSCHOOLS.NET

---

## Campus-Level Site-Based Decision-Making Committee

Thursday, September 15, 2022

4:15 p.m.

### Agenda:

- I. Welcome
- II. Review Current Enrollment
- III. Review Attendance
- IV. Review School Safety Procedures
- V. Review Budget
- VI. Professional Development Report
- VII. Review Comprehensive Needs Assessment Data
- VIII. Develop Campus Improvement Plan/ Cascading Report Card
- IX. Miscellaneous
- X. Next Meeting: Thursday, November 17, 2022, at 4:15

### Members:

Mandy Beauregard; Curriculum Supervisor  
Mario Salinas; Administrator Representative  
Christine Foutch; Secretary  
Taylor Worthington, Teacher  
Lauren Augsburger; Teacher  
Sondra Larcom; Teacher  
Lorraine Dow; Teacher  
Marina Rodriguez; Teacher  
Stacy Dial; Teacher  
Lynn Martinez; Teacher  
Terri Moorer; Teacher  
Jeanice Martin; Teacher

Victoria Salinas; Teacher  
Leann Minners; Parent  
Caitlyn Espitia; Parent  
Sam Canavati; Parent  
Missy Canavati; Parent  
Allison Foster; Business Representative  
Lily Salinas; Business Representative  
Elaine Boughton, Community Representative  
Javier Wiley, Community Representative  
Sal Alvarado; Principal



# Flour Bluff Intermediate

---

2505 WALDRON ROAD, CORPUS CHRISTI, TEXAS 78418 · PHONE (361) 694-9400 · FLOURBLUFFSCHOOLS.NET

---

Campus-Level Site-Based Decision-Making Committee  
Thursday, November 17, 2022  
4:15 p.m.

## Agenda:

- I. Welcome
- II. Review Current Enrollment
- III. Review Attendance
- IV. Review School Safety Procedures
- V. Review Budget
- VI. Professional Development Report
- VII. Miscellaneous
- VIII. Next Meeting:

## Members:

Mandy Beauregard; Curriculum Supervisor  
Mario Salinas; Administrator Representative  
Christine Foutch; Secretary  
Taylor Worthington; Teacher  
Lauren Augsburger; Teacher  
Sondra Larcom; Teacher  
Lorraine Dow; Teacher  
Marina Rodriguez; Teacher  
Stacy Dial; Teacher  
Lynn Martinez; Teacher  
Terri Mooror; Teacher  
Jeanice Martin; Teacher

Victoria Salinas; Teacher  
Leann Minners; Parent  
Caitlyn Espitia; Parent  
Sam Canavati; Parent  
Missy Canavati; Parent  
Allison Foster; Business Representative  
Lily Salinas; Business Representative  
Elaine Boughton; Community Representative  
Javier Wiley; Community Representative  
Sal Alvarado; Principal



# Flour Bluff Intermediate

---

2505 WALDRON ROAD, CORPUS CHRISTI, TEXAS 78418 • PHONE (361) 694-9400  
FLOURBLUFFSCHOOLS.NET

---

Campus-Level Site-Based Decision-Making Committee  
Thursday, November 17, 2022  
4:15 p.m.

## Minutes:

- I. Welcome
- II. Review Current Enrollment
  - Currently we serve 832 students.
- III. Review Attendance
  - Approximately 95%
- IV. Review School Safety Procedures
  - Exterior Door Sweeps
  - Classroom Door Checks/Sweeps
  - ID Badges/School Issued (Checks)
  - Active Supervision
  - Watchdogs Program
- V. Review Budget
  - 3 quote system
  - Title 1 tutoring
  - Afterschool Tutoring
  - Supplies that benefit our students and teachers, Interactive TVs, New Chromebooks
- VI. Professional Development Report
  - CAST in November (Conference for the Advancement of Science Teaching)



- Katie Doyle was one of the presenters.
- Texas Assessment Conference
- Texas Art Education Association

VII. Miscellaneous/ Upcoming Events

- Oceans Program is looking to partner up with Texas State Aquarium for education opportunities.
- Family Science Night tonight (6 to 7 p.m.)
- Early Student Release Friday @ 11:30
- Thanksgiving Holiday November 21st – 25th
- November 29th Intermediate Band Concert @ 6 p.m. @ HS Auditorium
- November 30th Launch Fun Run Fundraiser
- December 6th Intermediate Choir Concert @ 6 p.m. @ HS Auditorium
- Canned Food Drive starting November 30th thru December 16th (Coastal Ben Food Bank)

VIII. Next Intermediate SBDM Meeting is scheduled for Thursday, February 16, 2023

**Thank you for your continued Support**

**Have a Blessed Evening!**

**Attendance:** Meeting via  
ZOOM; September 15, 2022



## Participants (13)

Find a participant

<b>A</b>	ab9422 (Me)		
<b>SA</b>	Salvador Alvarado (Host)		
<b>E</b>	elaine		
<b>TM</b>	Terry Moorer		
<b>AF</b>	Alison Foster		
<b>CE</b>	Caitlyn Espitia		
<b>C</b>	cf9208		
<b>LM</b>	Leann Minners		
<b>L</b>	lmartinez		
<b>MC</b>	MISSY Canavati		
<b>RW</b>	Rachel Worthington		
<b>SC</b>	Sam Canavati		
<b>S</b>	slarcom		





# Flour Bluff Intermediate

---

2505 WALDRON ROAD, CORPUS CHRISTI, TEXAS 78418 · PHONE (361) 694-9400  
FLOURBLUFFSCHOOLS.NET

---

## Campus-Level Site-Based Decision-Making Committee

Thursday, February 16, 2023

4:15 p.m.

### Minutes:

- I. Welcome
- II. Review Current Enrollment
  - Currently we serve 827 students.
- III. Review Attendance
  - Approximately 95%
- IV. Campus Scorecard (Review No Progress – On Track)
  - Goal 1: Students Well-being and Academic Success
  - Texas Child Health Access Through Telemedicine (TCHAT) Program
  - Goal 2: Faculty and Staff: Well-being, Professional Development and Growth
  - Goal 3: Community Satisfaction and Engagement
  - Goal 4: Financial Stewardship
- V. Review School Safety Procedures
  - Exterior Door Sweeps
  - Classroom Door Checks/Sweeps
  - ID Badges/School Issued (Checks)
  - Active Supervision
  - Watchdogs Program
- VI. Review Budget

- Three quote system
- Title 1 tutoring
- After school Tutoring
- Supplies that benefit our students and teachers, Interactive TVs, New Chromebooks, Teacher Laptops, New microscopes for Science Lab
- 

VII. Professional Development Report

- CAST in November (Conference for the Advancement of Science Teaching)
- Katie Doyle was one of the presenters.
- Texas Assessment Conference
- Texas Art Education Association
- Rockin' Review (Lead4ward)

VIII. Student Dress Code

IX. Miscellaneous/ Upcoming Events

- Last Day to Donate for Intermediate Kids Heart Challenge  
[Donate now. https://bndfr.com/Y69Rw](https://bndfr.com/Y69Rw)
- TGI Friday's Fundraiser Today, February 16<sup>th</sup>
- February 16<sup>th</sup> Last Day of the Fourth 6-Weeks
- February 17<sup>th</sup> Student Holiday/Professional Development
- February 20<sup>th</sup> District Holiday
- Texas Public Schools Week February 27<sup>th</sup> – March 3<sup>rd</sup>
- Intermediate Open House March 9<sup>th</sup> (5:30 – 6:30)
- Spring Pictures March 10<sup>th</sup>
- Spring Break March 13<sup>th</sup> – 17<sup>th</sup>
- March 30<sup>th</sup> – 6<sup>th</sup> Graders attending Dangers of Smoking @ ABC (Ice Rays)
- April 3<sup>rd</sup> Color Fun Run Fundraiser Kick-Off

**Next Intermediate SBDM Meeting is scheduled for May 18, 2023**

**Thank you for your continued Support.**

**Have a Blessed Evening!**





# Flour Bluff Intermediate

---

2505 WALDRON ROAD, CORPUS CHRISTI, TEXAS 78418 · PHONE (361) 694-9400 · FLOURBLUFFSCHOOLS.NET

---

## Campus-Level Site-Based Decision-Making Committee

Thursday, February 16, 2023

4:15 p.m.

### Agenda:

- I. Welcome
- II. Review Current Enrollment
- III. Review Attendance
- IV. Campus Scorecard
- V. Review School Safety Procedures
- VI. Review Budget
- VII. Professional Development Report
- VIII. Student Dress Code
- IX. Miscellaneous
- X. Next Meeting: May 22, 2023

### Members:

Mandy Beauregard; Curriculum Supervisor  
Mario Salinas; Administrator Representative  
Christine Foutch; Secretary  
Taylor Worthington; Teacher  
Lauren Augsburg; Teacher  
Sondra Larcom; Teacher  
Lorraine Dow; Teacher  
Marina Rodriguez; Teacher  
Stacy Dial; Teacher  
Lynn Martinez; Teacher  
Terri Moor; Teacher  
Jeanice Martin; Teacher

Victoria Salinas; Teacher  
Leann Minners; Parent  
Caitlyn Espitia; Parent  
Sam Canavati; Parent  
Missy Canavati; Parent  
Allison Foster; Business Representative  
Lily Salinas; Business Representative  
Elaine Boughton; Community Representative  
Javier Wiley; Community Representative  
Sal Alvarado; Principal







## Flour Bluff Intermediate

2505 WALDRON ROAD, CORPUS CHRISTI, TEXAS 78418 · PHONE (361) 694-9400 · FLOURBLUFFSCHOOLS.NET

Campus-Level Site-Based Decision-Making Committee  
Thursday, February 16, 2023  
4:15 p.m.

Attendance:

Name	Position	Signature
Sal Alvarado	Principal	
Mandy Beauregard	Curriculum Supervisor	M. Beauregard
Christine Foutch	Secretary	
Mario Salinas	Administrator Representative	
Lauren Augsburger	Teacher	
Lorraine Dow	Teacher	
Stacy Dial	Teacher	
Sondra Larcom	Teacher	Sondra Larcom
Jeanice Martin	Teacher	
Lynn Martinez	Teacher	Lynn Martinez
Terri Moorer	Teacher	
Marina Rodriguez	Teacher	
Victoria Salinas	Teacher	
Taylor Worthington	Teacher	
Elaine Boughton	Community Representative	Elaine Boughton
Missy Canavati	Parent	Missy Canavati
Sam Canavati	Parent	Zoom
Caitlyn Espitia	Parent	
Allison Foster	Business Representative	
Leann Minners	Parent	Zoom
Lily Salinas	Business Representative	
Javier Wiley	Community Representative	



# Flour Bluff Intermediate

---

2505 WALDRON ROAD, CORPUS CHRISTI, TEXAS 78418 · PHONE (361) 694-9400 · FLOURBLUFFSCHOOLS.NET

---

## Campus-Level Site-Based Decision-Making Committee

Monday, May 22, 2023

4:15 p.m.

### Agenda:

- I. Welcome
- II. Review Current Enrollment
- III. Review Attendance
- IV. Final Review of Goals; Campus Scorecard
- V. Review Budget
- VI. Student Dress Code
- VII. Miscellaneous

### Members:

Mandy Beauregard; Curriculum Supervisor  
Mario Salinas; Administrator Representative  
Christine Foutch; Secretary  
Taylor Worthington, Teacher  
Lauren Augsburger; Teacher  
Sondra Larcom; Teacher  
Lorraine Dow; Teacher  
Marina Rodriguez; Teacher  
Stacy Dial; Teacher  
Lynn Martinez; Teacher  
Terri Moorer; Teacher  
Jeanice Martin; Teacher

Victoria Salinas; Teacher  
Leann Minners; Parent  
Caitlyn Espitia; Parent  
Sam Canavati; Parent  
Missy Canavati; Parent  
Allison Foster; Business Representative  
Lily Salinas; Business Representative  
Elaine Boughton, Community Representative  
Javier Wiley, Community Representative  
Sal Alvarado; Principal



## Flour Bluff Intermediate

2505 WALDRON ROAD, CORPUS CHRISTI, TEXAS 78418 · PHONE (361) 694-9400 · FLOURBLUFFSCHOOLS.NET

Campus-Level Site-Based Decision-Making Committee  
Thursday, February 16, 2023  
4:15 p.m.

Attendance:

Name	Position	Signature
Sal Alvarado	Principal	
Mandy Beauregard	Curriculum Supervisor	M. Beauregard
Christine Foutch	Secretary	
Mario Salinas	Administrator Representative	
Lauren Augsburger	Teacher	
Lorraine Dow	Teacher	
Stacy Dial	Teacher	
Sondra Larcom	Teacher	Sondra Larcom
Jeanice Martin	Teacher	
Lynn Martinez	Teacher	Lynn Martinez
Terri Moorer	Teacher	
Marina Rodriguez	Teacher	
Victoria Salinas	Teacher	
Taylor Worthington	Teacher	
Elaine Boughton	Community Representative	Elaine Boughton
Missy Canavati	Parent	Missy Canavati
Sam Canavati	Parent	Zoom
Caitlyn Espitia	Parent	
Allison Foster	Business Representative	
Leann Minners	Parent	Zoom
Lily Salinas	Business Representative	
Javier Wiley	Community Representative	



# Flour Bluff Intermediate

---

2505 WALDRON ROAD, CORPUS CHRISTI, TEXAS 78418 • PHONE (361) 694-9400  
FLOURBLUFFSCHOOLS.NET

---

Campus-Level Site-Based Decision-Making Committee  
Monday, May 22, 2023  
4:15 p.m.

## Minutes:

- I. Welcome
- II. Review Current Enrollment
  - Currently we serve 827 students.
- III. Review Attendance
  - Approximately 95%
- IV. Campus Scorecard; Final Review of Goals
  - Goal 1: Students Well-being and Academic Success  
*On-Track*
  - Goal 2: Faculty and Staff: Well-being, Professional Development and Growth  
*On-Track*
  - Goal 3: Community Satisfaction and Engagement  
*On-Track*
  - Goal 4: Financial Stewardship  
*On-Track*
- V. Review Budget
  - 3 quote system
  - Title 1 tutoring
  - After school Tutoring
  - Supplies that benefit our students and teachers, Interactive TVs, New Chromebooks, Teacher Laptops, New microscopes for Science Lab
- VI. Professional Development Report
  - CAST in November (Conference for the Advancement of Science Teaching)

- Katie Doyle was one of the presenters.
- Texas Assessment Conference
- Texas Art Education Association
- Rockin Review (Lead4ward)
- August 3, 2023, District PD (Intermediate)

VII. Student Dress code for 2023-2024  
(Standardized dress code along with the Junior High)

VIII. Miscellaneous

- May 24, 2023- Awards Assembly
- May 25, 2023-Report Cards Go Home
- May 25, 2023- Last Day for students; 11:30 release.

**Thank you for your continued Support**

**Have a Blessed Evening!**